



Port Stephens

in collaboration with Destination NSW for Port Stephens

Photo: Hamilton Lund/Destination NSW for Port Stephens

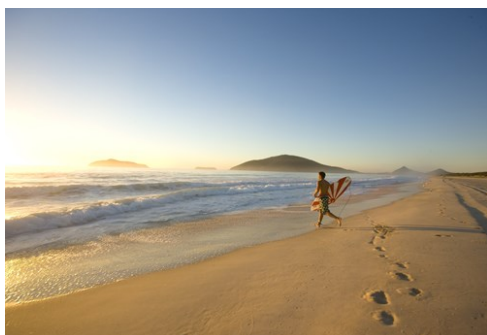


James Pipino/Destination NSW for Port Stephens

Blessed with 26 white sandy beaches, a vast blue bay and many tranquil inlets, Port Stephens is an idyllic destination about 2.5 hours' drive north of Sydney. With a marine park rich in diversity, the area is famous for its resident dolphins, crystal clear waters and towering sand dunes. Daily dolphin-watching cruises depart from Nelson Bay and the ocean is great for watching whales during their annual migration. Charming towns are framed by bushland, wetlands and volcanic peaks. Enjoy fresh seafood and local wines in delightful settings.



Hamilton Lund/Destination NSW for Port Stephens



James Pipino/Destination NSW for Port Stephens

QUIZ

*What Type of Traveller
Are You Based on
Your Travel IQ?*

TAKE THE QUIZ

Top 5



Beautiful Beaches

Port Stephens is known for its unspoilt beaches with perfect surf breaks or ...



Swim with Dolphins

Dolphin Swim Australia remains the only permitted wild dolphin swim in NSW, ...



Tomaree National Park - Fi...

Tomaree National Park is a magnificent backdrop to the charming coastal town...



Whale Watching

Port Stephens is a top spot to see humpbacks and southern right whales durin...



Sand Dune Adventures

Ride on quad bikes from the bush to the beach, traversing magnificent sand d...



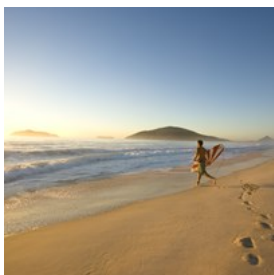
TOP THINGS TO DO



Dan Boud/Destination NSW for Port Stephens

Discover wonderful beaches and frolicking dolphins in Port Stephens, where you can enjoy exhilarating water sports such as sailing, kayaking, surfing and snorkelling. Choose from various dolphin-watching cruises departing from Nelson Bay. Other exciting activities include quad-biking and sand-boarding on the towering Stockton sand dunes, and horseriding through the surf at Anna Bay. Explore the many walking trails in magnificent national parks.

Beautiful Beaches



Port Stephens is known for its unspoilt beaches with perfect surf breaks or sheltered bays for swimming, snorkelling and kayaking. Or try parasailing over the bay. Walk along the beach at Shoal Bay to Tomaree Headland for splendid panoramas. At sunset, kayak with dolphins at Nelson Bay and Soldiers Point. Fingal Bay Beach has its own island. Surfers will be thrilled by One Mile Beach, Birubi Beach, Zenith Beach, Box Beach, or Samurai Beach. Families will love One Mile Beach, Boat Harbour and Birubi Beach.

Photo: James Pipino - Destination NSW

Internet: www.visitnsw.com/destinations/north-coast/port-stephens-area/beaches

Swim with Dolphins



Dolphin Swim Australia remains the only permitted wild dolphin swim in NSW, licensed by the Marine Park Authority to operate in the Port Stephens Great Lakes Marine Park. Aboard an ocean-going catamaran, qualified dive masters take you through the most amazing experience of your life, frolicking with short-beaked common dolphins and oceanic bottlenose dolphins.

Photo: Dolphin Swim Australia

Address: Nelson Bay, NSW 2315

Phone: 1300 721 358

Internet: www.visitnsw.com/things-to-do/tours/dolphin-swim-australia#aquatic-marine-viewing-experience

Tomaree National Park - Fingal Bay



Tomaree National Park is a magnificent backdrop to the charming coastal towns of Port Stephens. It's the only place in NSW where you can see outcrops of the acid volcanic rock rhyodacite. The stunning rocky bush coastline is a delight for walkers - take the short Wreck Beach trail through angophora forest - and great for whale watching. Check out the historic gun emplacements of Fort Tomaree. And take your fishing rod - the fish bite well.

Photo: John Spencer

Address: Tomaree National Park, Fingal Bay, NSW 2315

Internet: www.visitnsw.com/destinations/north-coast/port-stephens-area/attractions/tomaree-national-park

Whale Watching



Port Stephens is a top spot to see humpbacks and southern right whales during their annual migration. From mid May to early

September thousands of whales move north to their breeding grounds, and from mid September to mid October they migrate south - you may spot mothers playing with their newborn calves in the calmer waters. Watch them from Tomaree Head Summit - or get up close on a tour from Nelson Bay.

Photo: Stephen Murray of Imagine Cruises

Address: Port Stephens, NSW 2315

Internet: www.visitnsw.com/destinations/north-coast/port-stephens-area/whale-watching

Sand Dune Adventures



Ride on quad bikes from the bush to the beach, traversing magnificent sand dunes and learning about Aboriginal culture in the Worimi

Conservation Lands. On a Sand Dune Adventures tour, riding a 400 cc bike, you'll be in awe of the area's natural beauty. Expert Aboriginal guides will lead you through the Southern Hemisphere's largest moving coastal sand dunes, some rising more than 30 metres. You'll learn about traditional Aboriginal foods and how to find fresh water.

Photo: Sand Dune Adventures

Address: 2163 Nelson Bay Road, Williamtown, NSW 2314

Phone: +61 2 4033 8808

Internet:

www.visitnsw.com/things-to-do/tours/sand-dune-adventures

Murray's Brewery



Murray's Craft Brewing Co. is one of Australia's most beloved craft beer brewers, and shares its home with the region's oldest winery. Recognised

as one of Australia's top brewers, Murray's acclaimed beers feature in critics' lists of the best beers. Visitors to Murray's can taste the beers, as well as local and regional wines; dine at the Brewery Restaurant (food is made with and matched to beer), play bocce and listen to live music in the beautiful eucalypt and vine surrounds.

Photo: Murray's Brewery and Port Stephens Winery

Address: 3443 Nelson Bay Road, Bobs Farm, NSW 2315

Phone: +61 2 4982 6411

Internet: <https://www.visitnsw.com/destinations/north-coast/port-stephens-area/nelson-bay/food-and-drink/murrays-brewery-and-port-stephens-winery>

TOWNS OF PORT STEPHENS



Hamilton Lund/Destination NSW for Port Stephens

Dotted along the stunning coast of Port Stephens are charming towns. The bigger towns of Port Stephens are Tea Gardens, Shoal Bay and Nelson Bay. Of the smaller towns, Anna Bay is the gateway to the famous Stockton Beach sand dunes and the oasis of One Mile Beach. Fingal Bay is a fishing destination in the Tomaree National Park. Lemon Tree Passage guards

Tilligerry Creek point and is home to beautiful native flora walks. Salamander Bay is home to Holberts' delicious oysters. Soldiers Point enjoys a state-of-the-art marina and Tanilba Bay is where visitors flock to see koalas in their natural habitat.

Nelson Bay



Nelson Bay, on the southern shores of Ports Stephens, is a major holiday playground and the main town in the area. The abundance of nature parks, marine life, brilliant beaches and bays are what make Nelson Bay beautiful. You'll also enjoy the friendly community, buzzing events calendar, gourmet restaurants, beautiful boutiques and art galleries plus award-winning places to stay.

Photo: Ethan Rohloff - Destination NSW

Internet: www.visitnsw.com/destinations/north-coast/port-stephens-area/nelson-bay

Shoal Bay



Gorgeous, tranquil and a great base for sports fishing and scuba diving, Shoal Bay is named after the numerous sand shoals scattered around the peninsula. Close to Nelson Bay, this is a beautifully sheltered waterway. A top drawcard to Shoal Bay is the biggest game fishing competition in the Southern Hemisphere, held each February. The is also excellent for bushwalking and bike riding.

Photo: Jason Busch - Destination NSW

Internet: www.visitnsw.com/destinations/north-coast/port-stephens-area/shoal-bay

Tea Gardens



Tea Gardens is a small town on the Myall River, just a short drive across the "whistling" bridge to neighbouring Hawks Nest. Surrounded by wetlands, the foundation for the town's valuable fishing industry, Tea Gardens is the southern gateway to the Great Lakes, with a reputation for good food and great events, including the Myall River Festival. Along the waterfront is a meandering art walk. There is plenty of good accommodation, outdoor cafés, moored boats to hire and fresh oysters to sample.

Photo: James Pipino - Destination NSW

Internet: www.visitnsw.com/destinations/north-coast/forster-and-taree-area/tea-gardens

DO & SEE



James Pipino/Destination NSW for Port Stephens

The natural wonders and idyllic climate of Port Stephens makes it a great destination for outdoor adventures. As well as swimming and surfing, you can try parasailing, jet-skiing, kayaking, sailing, or game fishing. Camp in a national park and go koala spotting, or hike to the peak of a mountain for gorgeous coastal vistas and dolphin and whale watching. Scuba divers can explore the sea caves, sponge gardens and shipwrecks at Fly Point Marine Park. Closer

to shore, crystal clear rock pools teeming with life will enthrall young explorers. You can play an unforgettable round of golf, or pet a friendly shark - Port Stephens is a beach holiday destination with the lot.

Sand Dune Adventures



Sand Dune Adventures (SDA) offers clients an exclusive 'Cultural Quad Bike Riding' experience like no other; traversing the majestic and

traditional landscape of the Worimi Sand Dunes / Port Stephens in NSW, recorded as the largest coastal moving sand mass in the Southern Hemisphere. Customers ride safely from bush to beach on a 400cc quad bike and take in the glorious views of the sweeping coastline (no experience necessary) with experienced Aboriginal guides.

Customers receive hands-on introductions to authentic Aboriginal culture and history, visiting ancient campsites and learning about the local bush foods, medicines and the secrets of finding fresh water. SDA tours cater from beginners to the experience and offer the thrill of riding sand dunes that climb as high as 100 feet.

So if it is adrenalin or just cruising; SDA offers the greatest adventure on one of Australia's greatest kept secrets, the Worimi Sand Dunes!

Photo: Sand Dune Adventures

Address: 2163 Nelson Bay Road Williamtown NSW 2318

Phone: +61 2 4033 8808

Internet: <https://www.visitnsw.com/things-to-do/tours/sand-dune-adventures>

Tomaree Head Summit Walk



Take the invigorating short walk to the summit of Tomaree Head, 161 metres above the Port Stephens entrance. As you hike the track, you'll

enjoy unparalleled views of idyllic Port Stephens and its coastline. From the top, you can even see as far as Cabbage Tree and Boondelbah islands - these nature reserves are the world's only nesting sites for the endangered Gould's petrel. When you reach the summit, enjoy panoramic views of Yacaaba Head, Cabbage Tree, Boondelbah and Broughton Islands from the north platform. From the south platform, views of Zenith, Wreck and Box Beaches, Fingal Island and Point Stephens Lighthouse will be sure to impress. Be sure to check out the historic World War II gun emplacements. Take your binoculars as you might be lucky to see some dolphins. There's a picnic table at the lookout, so if you have time, take a picnic lunch or some morning tea to enjoy as you take in the view. On the way back down, don't forget to try Fort Tomaree walk.

Photo: John Spencer OEH

Address: Shoal Bay Road, Shoal Bay, NSW 2315

Internet: <https://www.visitnsw.com/destinations/north-coast/port-stephens-area/shoal-bay/attractions/tomaree-head-summit-walk>

Irukandji Shark and Ray Encounters - Bobs Farm



Irukandji Shark and Ray Encounters are leaders in marine education, conservation and fun.

This unique experience is unmatched by any other

location in the country. Visitors interact with

marine life during a guided shark encounter tour; joining them in their world, petting and feeding them all under the ever-watchful eyes of the experienced guides.

Irukandji is a massive family, fish and staff alike, as they set out to reveal the true character of some of the worlds most beautiful, intelligent, elusive creatures, at the same time they educate visitors about Australia's delicate ocean ecosystems, ocean pollution and conservation.

Located in the beautiful Port Stephens on the mid north coast: one of the best holiday destinations in Australia.

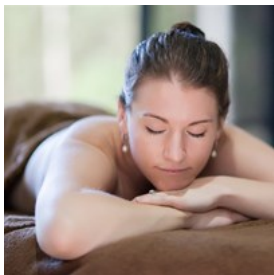
Photo: Irukandji Shark and Ray Encounters

Address: 686 Marsh Road, Bobs Farm, NSW 2316

Phone: +61 2 4982 2476

Internet: www.visitnsw.com/destinations/north-coast/port-stephens-area/nelson-bay/attractions/irukandji-shark-and-ray-encounters

Body & Soul Spa Retreat



Pamper yourself at a day spa in a relaxed and tranquil setting. Body and Soul Spa Retreat at Oaks Pacific Blue Resort, in Salamander Bay, offers anti-ageing treatments, massage, facials, body rituals, waxing, manicures, pedicures, tinting and more. This award-winning luxurious spa is a perfect escape to revive the body and soothe the spirit.

Photo: Studio 4 Photography - Body and Soul Spa Retreat

Address: The Oaks Pacific Blue Resort, Sandy Point Road, Salamander Bay, NSW 2317

Phone: +61 2 4981 4875

Internet: <https://www.visitnsw.com/destinations/north-coast/port-stephens-area/attractions/body-and-soul-spa-retreat>

Gan Gan Lookout



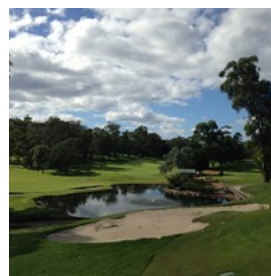
The highest lookout in Port Stephens offers spectacular views, especially at dusk. On a clear day you can see all the way down the peninsula to the Newcastle docks, and north-west over Hawks Nest to the gigantic headlands of Nelson Head and Nelson Bay. The drive up Lily Hill road to Gan Gan Lookout - through an abundance of Gymea lilies, which grow to five metres - is gorgeous.

Photo: Gan Gan Hill Lookout

Address: Lily Hill Road, Nelson Bay, NSW 2315

Internet: www.visitnsw.com/destinations/north-coast/port-stephens-area/nelson-bay/attractions/gan-gan-hill-lookout

Nelson Bay Golf Club



Nelson Bay Golf Club is located in the bluewater wonderland of Port Stephens approximately 2.5 hours north of Sydney. The 27 hole championship bush course by the sea is set among a wide range of native trees with an abundance of wildlife including kangaroos, wallabies, koalas and native birds. They are open to members and visitors, seven days a week, and their staff are dedicated to providing first class service to ensure your day is enjoyable. After your golf, enjoy the modern clubhouse and bistro, with panoramic views out over the golf course and surrounding mountains. If you are looking to host an event, their function team are ready to assist you with whatever special occasion you are organising. Whether it be a wedding, engagement, birthday, charity fundraiser, or any other social event.

Photo: Nelson Bay Golf Club
Address: 61 Dowling Street, Nelson Bay, NSW 2315
Phone: +61 2 4981 1132
Internet: <https://www.visitnsw.com/destinations/north-coast/port-stephens-area/nelson-bay/attractions/nelson-bay-golf-club>

Great Lakes Marine Park



The 98,000 hectare Great Lakes Marine Park extends from Stockton Beach to Forster - including Port Stephens, Karuah River, Myall

River, Myall and Smiths Lake - and three nautical miles out to sea. On shore, the bushland has many indigenous cultural and spiritual sites. Offshore, deep submerged cliffs create a water heaven for divers. An official marine conservation area, the park is home to dolphins, turtles, fish, seabirds and seaweeds, along with threatened species such as grey nurse sharks and green turtles.

Photo: Great Lakes Marine Park
Address: Victoria Parade, Nelson Bay, NSW 2315
Phone: +61 2 4984 8270
Internet: www.visitnsw.com/destinations/north-coast/port-stephens-area/nelson-bay/attractions/port-stephens-great-lakes-marine-park

Hunter Botanic Gardens - Heatherbrae



The award-winning Hunter Region Botanic Gardens feature more than 30 hectares of tranquil landscaped gardens displaying the

beauty and diversity of Australian native flora. The gardens also feature a large expanse of natural bushland with several walking tracks. The walks provide an opportunity to see local plants and wildlife including birds, goannas, possums, wallabies and koalas.

Photo: Hunter Region Botanic Gardens
Address: 2100 Pacific Highway, Heatherbrae, NSW 2324
Phone: +61 2 4987 1655
Internet: <https://www.visitnsw.com/destinations/north-coast/port-stephens-area/attractions/hunter-region-botanic-gardens>

Myall Lakes National Park

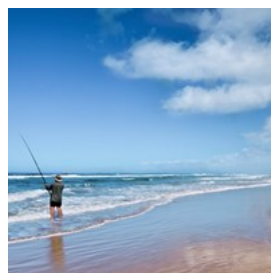


Myall Lakes is one of the largest coastal lake systems in NSW. The lake and beaches are perfect for water activities including kayaking,

canoeing, boating, fishing, swimming and surfing. Overnight camping sites provide a choice of tent, trailer, caravan, motor home and even boat sites. Don't miss the Grandis Gum - at 76 metres it's one of the tallest trees in the State. Dark Point, a rocky headland north of Hawks Nest, is rich in Aboriginal cultural history.

Photo: Myall Lakes National Park
Address: Mungo Brush Road, Mungo Brush, NSW 2423
Phone: +61 2 6591 0300
Internet: <https://www.visitnsw.com/destinations/north-coast/forster-and-taree-area/attractions/myall-lakes-national-park>

Stockton Beach



Stockton Beach stretches 32 km and is a sweeping expanse of sand and sand dunes and Australia's largest moving coastal sand mass. The gigantic

dunes, behind Birubi Beach at Anna Bay, are a magnet for sand boarders, 4WD and quad bike enthusiasts. The beach is also great for swimming and learning to surf. Rich with marine life, fishing and diving is also popular at Stockton. After your adventures, enjoy a picnic and barbecue in the park next to the beach.

Photo: Stockton Beach

Address: Pitt Street, Stockton, NSW 2295

Internet: www.visitnsw.com/destinations/north-coast/newcastle-area/newcastle/attractions/stockton-beach

CAFÉS, DINING & BARS



Destination NSW for Port Stephens

Port Stephens is a delicious destination for fresh seafood and seasonal produce. Waters are teeming with fish and there are many regional growers, producers and winemakers, Talented chefs create menus displaying culinary freshness, innovation and expertise. You'll be delighted with freshly caught seafood matched with local wines and splendid water views. Relax in a beautiful beachside café - fuss free is the motto. Enjoy a meal in a chic bistro, take the family for fish and chips or a hearty pub meal. The region also offers several great wineries and breweries to tour.

Little Beach Boathouse Restaurant and Bar



Little Beach Boathouse Restaurant and Bar brings together the very best of Port Stephens. Amazing water views, a friendly relaxed

atmosphere and some of the most delicious, fresh seafood on the East coast of Australia. The absolute waterfront location offers a fresh, natural, coastal vibe and is the perfect place for a romantic dinner, a special celebration or just a

leisurely long lunch.

Of course, the menu has an emphasis on fresh local seafood however they don't forget the meat lovers and vegetarians, and children are always welcome.

Their amazing team pride themselves on quality, welcoming service and when you combine this with beautiful food, great wine and craft beer its easy to see why Little Beach Boathouse is the favourite of visitors and locals alike.

Photo: Hover UAE - Little Beach Boathouse August 2016

Address: 4 Victoria Parade, Nelson Bay NSW 2315

Phone: +61 2 4984 9420

Internet: <https://www.visitnsw.com/destinations/north-coast/port-stephens-area/nelson-bay/food-and-drink/little-beach-boat-house-restaurant-and-bar>

Rick Stein at Bannisters Port Stephens



Inspired by their stunning coastline, Rick Stein at Bannisters is opening in Port Stephens. Located on Soldiers Point Peninsula its the perfect

location for true lovers of freshly caught seafood and great wine.

Fresh seafood simply prepared is the hallmark of a Rick Stein kitchen. Their dedicated team of chefs use nothing but the finest locally sourced ingredients from ocean to plate every day, and every aspect is crafted with the passion and excitement that defines Rick's cooking style.

The Bannisters experience is deeply connected to Rick and Sarah Stein's natural affinity with the unique Australian coastline. They focus on putting the produce at the forefront to create simple dishes, cooked to perfection and bursting with flavour.

Photo: David Griffen

Address: 147 Soldiers Point Road, Soldiers Point NSW 2317

Phone: + 61 2 4919 3800

Internet: <https://www.visitnsw.com/destinations/north-coast/port-stephens-area/food-and-drink/rick-stein-bannisters-port-stephens>

Nelson Bay Fishermen's Wharf Seafoods



There's something special about buying your fish and chips down at the wharf. It's not just for the freshness of the produce, though that is without a doubt a major drawcard, but also for the local knowledge and stories you'll hear from the friendly staff.

Whether it's a takeaway portion of fish and chips or a fresh fillet to barbecue later on, head down to Fishermen's Wharf Seafoods for the freshest catch of the day.

Photo: Nelson Bay Fisherman's Wharf

Address: 1 Teramby Road, Nelson Bay NSW 2315

Phone: +61 2 4984 3917

Internet: <https://www.visitnsw.com/destinations/north-coast/port-stephens-area/nelson-bay/food-and-drink/nelson-bay-fishermens-wharf-seafoods>

The Point



Location and ambience complement a great dining experience at this stunning waterfront spot in the Soldiers Point Marina overlooking

untouched hinterland. The succulent seafood menu justifies the many awards The Point has earned, including Best Seafood Restaurant in the region. Enjoy a cocktail or excellent glass of wine and take in the breathtaking sunsets.

Photo: The Point

Address: Sunset Boulevarde, Soldiers Point, NSW 2317

Phone: +61 2 4984 7111

Internet: www.visitnsw.com/destinations/north-coast/port-stephens-area/port-stephens-area-surrounds/restaurants/the-point-restaurant

Holberts Oyster Farm



Holberts Oyster Supplies are Port Stephens' leading oyster growing and processing business. For over five generations the Holbert family have been growing and distributing their award winning oysters to local restaurants and seafood outlets around the Port Stephens area.

During recent years, Holberts Oysters has expanded considerably to be one of, if not the biggest, processor of oysters in New South Wales. This expansion sees their product sent not only locally, but right throughout the state, interstate, and export markets.

A key to their expansion was the opening of the new waterfront factory outlet, located on the shores of Cromarty Bay. The new premises have been designed with customer needs in mind. A large shop front with a vast array of freshly shucked oysters and other local seafood is available.

Photo: Holberts Oyster Farm

Address: Diemars Road Lot 52, Salamander Bay NSW 2317

Phone: +61 2 4982 7234

Internet: <https://www.visitnsw.com/destinations/north-coast/port-stephens-area/food-and-drink/holberts-oyster-farm>

EVENTS



Destination NSW for Port Stephens

Port Stephens hosts spectacular music and cultural festivals, thrilling sporting events and exciting family entertainment. The region is brimming with creativity, from celebrating delicious local produce and wines to displaying arts and crafts at regular community markets.

Myall River Festival



This October event offers spring market stalls, stage entertainment, river activities, games and competitions for all. The family friendly Myall

River Festival kicks off with a floating lantern display and fireworks on the river. You'll also enjoy live music, duck racing, boating, dancing, a pet parade and a chance to watch artists at work in Galleries in the Gardens.

Photo: Myall River Festival

Address: Marine Drive, Tea Gardens, NSW 2324

Phone: +61 6554 8789

Internet: www.visitnsw.com/events/myall-river-festival

Sail Port Stephens



If one event captures the spirit of Port Stephens - this is it. Each April, one of the fastest growing regattas in Australia sets sail from the glistening waterways of the marine park and out to sea, around the islands and back. This gorgeous race course is set to become internationally recognised. But it's not all about sailing and spinnakers - the event is a load of fun with family entertainment to be found both on and off the water. Keep an eye out for the Regatta Markets.

Photo: Sail Port Stephens

Address: d'Albora Marina, Teramby Road, Nelson Bay, NSW 2315

Phone: +61 422 844 198

Internet: www.visitnsw.com/events/sail-port-stephens

SHOPPING



Destination NSW for Port Stephens

A natural paradise, Ports Stephens is blessed with a glorious bounty of delicacies and treats. Pick yourself up some fresh rock oysters, avocados, macadamias, figs, olives, or seafood for the barbecue. Along with freshly caught and harvested seafood and seasonal fresh produce, the area offers gorgeous local arts and boutiques.

Tomaree Markets



The Tomaree Markets are held every second and fourth Sunday of the month at Tomaree Sports complex. They are a community market with craft, food products, designer items, live music and much more. From jewellery to local artists, olive oils to creative types: Tomaree Markets has it all.

Come and enjoy the fun. Free off street parking in the many car parks.

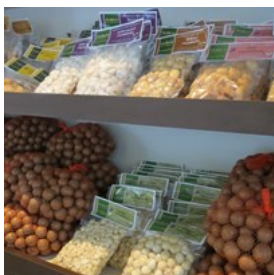
Photo: Tomaree Markets

Address: Tomaree Sports Complex Nelson Bay Road Nelson Bay, NSW 2315

Phone: +61 2 4982 5852

Internet: <https://www.visitnsw.com/destinations/north-coast/port-stephens-area/nelson-bay/events/tomaree-markets>

Medowie Macadamias



The Medowie plantation, established in 1980, grows five varieties of macadamia trees over five hectares. The plantation is family

owned and run, from planting to harvesting to experimenting in the kitchen with new and tasty treats for visitors to take away. Try the chilli-flavoured nuts and macadamia brittle, plus macadamia ice cream as well as oils, beauty products and other great gifts.

Photo: Medowie Macadamia Farm

Address: 672 Medowie Road, Medowie, NSW 2318

Phone: +61 2 4982 2888

Internet: <https://www.visitnsw.com/destinations/north-coast/port-stephens-area/food-and-drink/medowie-macadamias>

Nelson Bay Fishermen's Wharf Seafoods



An institution in Nelson Bay, the wharf is famous for its prize-winning fish and chips plus a range of the freshest prawns, snapper, flathead,

jewfish, cod, salmon, tuna and ocean trout unloaded daily from the fishing trawlers. Choose your fresh fish and watch it being filleted. Or select from the lobster tanks for live shellfish that's cooked on the spot. Meeting the staff and hearing the local stories make heading down to Fishermen's Wharf Seafoods well worth it.

Photo: Nelson Bay Fishermans Wharf Seafood

Address: 1 Teramby Road, Nelson Bay, NSW 2315

Phone: +61 2 4984 3330

Internet: www.visitnsw.com/destinations/north-coast/port-stephens-area/nelson-bay/food-and-drink/nelson-bay-fishermens-wharf-seafoods

Port Stephens Market



This delightful monthly market is where you'll find the wonderful things the community produces. A range of stalls flourish with flowers, plants,

paintings, clothing for all ages, baby goods and even animal treats. Kids entertainment includes face painting and a jumping castle. Goodies include a sausage sizzle, homemade cakes, Devonshire Teas and coffee. The market is held on the fourth Saturday of the month, except in December.

Photo: Dan Chojnacki - Entice Images

Address: Port Stephens Church of Christ, Nelson Bay Road, Salt Ash, NSW 2318

Phone: +61 434 359 816

Internet: <https://www.visitnsw.com/destinations/north-coast/port-stephens-area/events/port-stephens-market>

Port Stephens Community Arts Centre



The Community Arts Centre at Port Stephens is a hidden gem where you'll discover the skills of the region's artisans and take home some

beautiful gifts and mementos. The centre houses a number of galleries displaying large collections of arts and crafts - all for sale at reasonable prices. The Arts Centre have a delightful weekend café for light lunches and drinks.

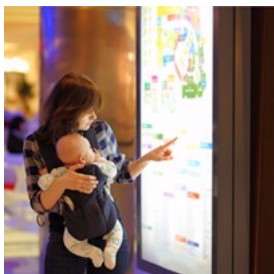
Photo: Port Stephens Community Arts Centre

Address: Cultural Place, off Shoal Bay Rd, Nelson Bay, NSW 2315

Phone: +61 2 4981 3604

Internet: <https://www.visitnsw.com/destinations/north-coast/port-stephens-area/nelson-bay/attractions/port-stephens-community-arts-centre-gallery>

Salamander Bay Shopping Centre



With fashion, food and services, you're sure to find what you need. The shopping centre offers over 80 retailers plus the added convenience of

Coles, Kmart, Target Country, Woolworths, Aldi, a food court, and parking for over 1,000 cars.

The range of specialty stores includes women's and men's fashion, jewellery, homewares, coffee shops, a newsagent and post office, and more.

Photo: Salamander Bay Shopping Centre

Address: 2 Town Centre Circuit, Salamander Bay, NSW 2317

Phone: +61 2 4982 0066

Internet: www.visitnsw.com/destinations/north-coast/port-stephens-area/attractions/salamander-shopping-centre

Tailor Made Fish Farm



Tailor Made Fish Farms is a unique aquaculture and hydroponics operation providing live barramundi to restaurants. Using

award-winning and internationally recognised recirculation technology, Tailor Made Fish Farms can offer visitors a combined package of Production Tours that run daily at 11am and 2pm, with a delicious dining experience at the Cookabarra Restaurant and Function Centre.

Photo: Cookabarra Restaurant and Function Centre

Address: 476C Marsh Road, Bobs Farm, NSW 2316

Phone: +61 2 4982 6740

Internet: <https://www.visitnsw.com/destinations/north-coast/port-stephens-area/nelson-bay/food-and-drink/cookabarra-restaurant-and-function-centre>

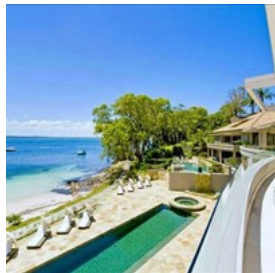
ACCOMMODATION



Destination NSW for Port Stephens

Port Stephens is a popular holiday destination and offers a range of accommodation to suit your budget, from camping areas to luxury resorts. You can choose from a traditional camping holiday by the bush and the beach, to glamping, sophisticated townhouses, a renovated lighthouse, holiday houses and luxury hotels.

Amarna Resort



Enjoy snorkelling, fishing, hiking, biking or simply soaking up the sun by the pool with a secluded beach beyond? Amarna is the only luxury boutique

resort overlooking Dutchmans Bay. With eleven exclusive suites, Amarna offers cool sea breezes, spectacular sunsets and a white sandy beach on the doorstep, plus a heated 25-metre lap pool with spa.

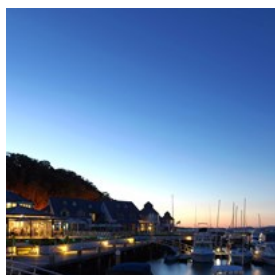
Photo: Amarna Resort

Address: 16 Christmas Bush Avenue, Nelson Bay, NSW 2315

Phone: +61 2 4981 1644

Internet: www.visitnsw.com/destinations/north-coast/port-stephens-area/nelson-bay/accommodation/amarna-resort

The Anchorage Port Stephens | Hotel & Spa



The Anchorage is luxury boutique resort. This seaside escape with its nautical overtones is the ideal intimate hideaway.

With the marina on one

side and rugged bushland on the other, this tranquil spot ensures a peaceful break - whether you play a few rounds of golf or a game of tennis or relax with a book by the pool.

Photo: Anchorage Port Stephens

Address: Corlette Point Road, Corlette, NSW 2301

Phone: +61 2 4984 2555

Internet: <https://www.visitnsw.com/destinations/north-coast/port-stephens-area/accommodation/the-anchorage-port-stephens-hotel-spa>

Cote d'Azure



All anyone could want in a resort - a heated pool, gym, sauna and beautiful gardens make Cote d'Azure an award winner. Choose from 54 modern

apartments with the latest fit-outs, plus three penthouse complexes overlooking Nelson Bay. From the top floor view Hawks Nest and even get a glimpse of Broughton Island. On-site managers will take care of all your needs and wants.

Photo: Cote d'Azure

Address: 61 Donald Street, Nelson Bay, NSW 2315

Phone: +61 2 4984 9595

Internet: www.visitnsw.com/destinations/north-coast/port-stephens-area/nelson-bay/accommodation/cote-d-azur

Fingal Bay Holiday Park



Stay in self-contained luxury at a Beach House or camp out in the park and cook up delicious meals in the camp kitchen. This is an

award-winning holiday location for families, or a group of friends who want a casual vacation. Fingal Bay Holiday Park provides beach and bushwalking on the doorstep, and is only five minutes from the heart of Nelson Bay and a pebble's throw from Shoal Bay.

Photo: Fingal Bay Holiday Park

Address: 52 Marine Drive, Fingal Bay, NSW 2315

Phone: +61 2 4981 1473

Internet: <https://www.visitnsw.com/destinations/north-coast/port-stephens-area/accommodation/fingal-bay-holiday-park>

Halifax Holiday Park



A multiple award-winning holiday park in the bush at the calm Shoal Bay and Little Beach. Halifax is a favourite for boating enthusiasts with a marina and deep water ramp nearby. The park offers a great mix of luxurious villas and budget-friendly accommodation options.

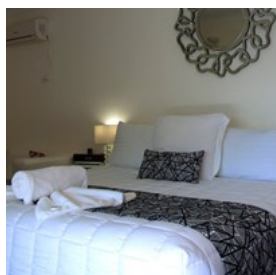
Photo: Halifax Holiday Park

Address: Beach Road, Little Beach, Nelson Bay, NSW 2315

Phone: +61 2 4981 1522

Internet: www.visitnsw.com/destinations/north-coast/port-stephens-area/nelson-bay/accommodation/halifax-holiday-park

Karuah Motor Inn



Within easy reach of shops, restaurants and all the essentials, this motor inn is set in a beautiful garden in the heart of Karuah. Quiet and peaceful, it's also only 200 metres from the river – and you can rent a fishing rod. Golf, tennis, bowls and basketball complete the sporting picture of this fun holiday spot.

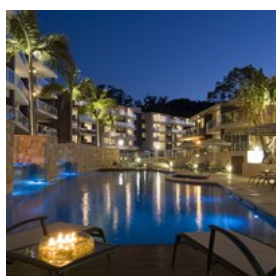
Photo: Karuah Motor Inn

Address: 422 Tarean Road, Karuah, NSW 2324

Phone: +61 2 4997 5336

Internet: www.visitnsw.com/destinations/north-coast/port-stephens-area/accommodation/karuah-motor-inn

Mantra Aqua Resort



Mantra Aqua Resort offers contemporary, spacious, open plan apartments (two and three bedrooms). Large living areas flow out to balconies overlooking a glorious lagoon pool and

landscaped gardens. Close to the marina and the bay, shopping and restaurants are within easy access along with a selection of sparkling beaches.

Photo: Mantra Aqua Resort

Address: 1A Tomaree Street, Nelson Bay, NSW 2315

Phone: +61 2 4916 4777

Internet: www.visitnsw.com/destinations/north-coast/port-stephens-area/nelson-bay/accommodation/mantra-aqua-resort

Marty's At Little Beach



Top of the list in many guides, the service at this beautiful boutique accommodation is impeccable. Modern and spacious self-contained apartments and motel-style rooms nestle between two of Port Stephens best beaches - Shoal Bay with its superb sunrises and Little Beach with its sublime sunsets. All within two minutes walk of the soft sands, this gorgeous spot enjoys rave reviews.

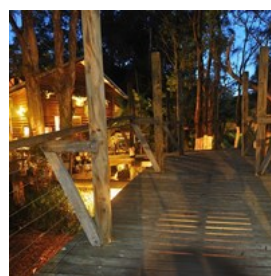
Photo: Martys at Little Beach

Address: Corner Gowrie Ave & Intrepid Close, Nelson Bay, NSW 2315

Phone: +61 2 4984 9100

Internet: <https://www.visitnsw.com/destinations/north-coast/port-stephens-area/nelson-bay/accommodation/martys-little-beach>

Melaleuca

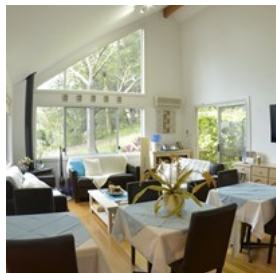


This is a backpacker's Eden – with boutique cabins, dormitory rooms, camping or Kombi van sites. Melaleuca is architecturally designed using wood and glass to maximise light, space and harmony with nature. The main building has double kitchens with lounge area and Wi-Fi, a

laundry and decks outside for sitting under the stars. This getaway in the trees is guaranteed to restore harmony to the soul.

Photo: Melaleuca Backpackers - Anton
Address: 2 Koala Place, One Mile Beach, Boat Harbour, NSW 2316
Phone: +61 2 4981 9422
Internet: <https://www.visitnsw.com/destinations/north-coast/port-stephens-area/accommodation/melaleuca-surfside-backpackers>

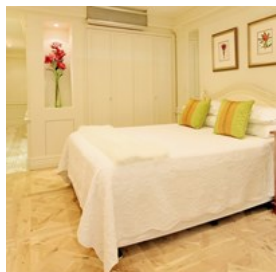
Nelson Bay Bed And Breakfast



More like a boutique hotel than a B&B, this architect-designed sanctuary has the privacy of separate accommodation and the convivial atmosphere provided by the host, who takes care of every little thing. And it's just minutes away from restaurants, the marina and all boating activities, and beaches - within the peace of a bushland environment.

Photo: Nelson Bay Bed And Breakfast
Address: 81 Stockton Street, Nelson Bay, NSW 2315
Phone: +61 2 4984 3655
Internet: www.visitnsw.com/destinations/north-coast/port-stephens-area/nelson-bay/accommodation/nelson-bay-bed-and-breakfast

Pacific Blue Apartment 288



Step into absolute luxury in this first floor apartment overlooking the lagoon pool that wraps around the resort. It's perfect for couples, honeymooners and those looking for an indulgent weekend away, short break or holiday. Beautifully appointed and with access to all the resort facilities (pools, tennis court, gym, sauna,

day spa, restaurant and bar).

Photo: Pacific Blue Apartment 288A
Address: 265 Sandy Point Road, Salamander Bay, NSW 2317
Phone: +612 4981 1577
Internet: <https://www.visitnsw.com/destinations/north-coast/port-stephens-area/accommodation/pacific-blue-apartment-288a>

Shoal Bay Holiday Park



This award-winning camp site is directly opposite what is regarded as one of the most beautiful beaches on the East Coast of Australia - stunning Shoal Bay. Chrystal clear waters and fine white sand provide a flawless swimming spot. And a minute's walk will take you to cafés, boutiques, restaurants and bars.

Photo: Shoal Bay Holiday Park
Address: Shoal Bay Road, Shoal Bay, NSW 2315
Phone: +61 2 4981 1427
Internet: <https://www.visitnsw.com/destinations/north-coast/port-stephens-area/shoal-bay/accommodation/shoal-bay-holiday-park>

Sugarloaf Point Lighthouse



Nestled underneath the historic Sugarloaf Point Lighthouse, the three lighthouse keepers' cottages offer restored, beautifully appointed, old world charm with modern conveniences. The cottages are located above the sleepy fishing village of Seal Rocks, within Myall Lakes National Park. All cottages offer interrupted ocean views, are self-contained and fully equipped for self catering. Each cottage has up to two or three bedrooms and generously accommodates up to six or eight guests.

Photo: Sugarloaf Point Lighthouse Accommodation
Address: 1 Kinka Rd, Seal Rocks, NSW 2423
Phone: +61 2 4997 6590
Internet: <https://www.visitnsw.com/destinations/north-coast/forster-and-taree-area/accommodation/sugarloaf-point-lighthouse-accommodation>

The Nelson Resort



This stylish and contemporary boutique hotel offers easy walking to the marina with its boats, bars and restaurants. Closer to home, there are great facilities for tennis and swimming or work out in the gym and then relax in the sauna. Rooms come complete with absolute comfort and balconies from which to enjoy the sparkling bay views.

Photo: The Nelson Resort
Address: 3 - 7 Government Road, Nelson Bay, NSW 2315
Phone: +61 2 4916 4600
Internet: <https://www.visitnsw.com/destinations/north-coast/port-stephens-area/nelson-bay/accommodation/hotel-nelson-formerly-the-nelson-resort>

TOURIST INFORMATION



Hamilton Lund/Destination NSW for Port Stephens

Port Stephens is easy to get to from any of Australia's major cities, and has excellent infrastructure and facilities to support a memorable holiday on the coast.

Airport



From Newcastle Airport, in Williamstown, it's a half-hour drive to most of the beautiful beaches in the Port Stephens area.

Airlines Qantas, Jetstar, Virgin Australia, Regional Express (REX) and FlyPelican service the airport, allowing easy access on a daily basis.

Port Stephens Coaches operate a public bus service from Newcastle Airport to Newcastle train station up to 11 times per day, as well as a service to the Nelson Bay area. For further information and timetables, phone: +61 2 4982 2940 or visit www.pscoaches.com.au.

Photo: Juan Garces
Address: 1 Williamstown Drive, Williamstown, NSW 2318
Phone: +61 2 4928 9800
Internet: www.newcastleairport.com.au

Public transport



CountryLink provides rail services in and out of Newcastle from many regions within New South Wales. The trip is leisurely, picturesque and great value - well worth the time. There are regular train services from Sydney to Newcastle.

Photo: Pierre-Luc Auclair
Internet: www.nswtrainlink.info or www.transportnsw.info

Driving to Port Stephens



Port Stephens is on the New South Wales coast 200 km north of Sydney. It's an easy route to drive, which takes about 2.5 hours along the M1

highway. At the end of the M1, turn right at the roundabout and follow the sign "Hexham and Pacific Highway". Veer to the right and merge with the New England Highway then merge to the left at the sign "Taree and Pacific Highway" which takes you over the Hexham Bridge. Turn right onto Tomago Road, and turn left into Nelson Bay Road at the roundabout. Then follow the signs to your Port Stephens destination.

Photo: Rauf Aliyev

Hire Cars



All major rental car companies are based at Newcastle Airport.
Thrifty Car Hire - www.thrifty.com.au
Budget Car Hire -

www.budget.com.au

Europcar - www.europcar.com.au

Avis - www.avis.com.au

Hertz - www.hertz.com.au

Nelson Bay Hire Cars and Limousines:

Phone: 02 4984 7766

Photo: ArrivalGuides

Medical



CHEMMART PHARMACY

• 18 Stockton St., Nelson Bay, NSW 2315 •

Phone: +61 2 4984 2445

ANNA BAY PHARMACY •

129 Gan Gan Rd., Anna

Bay, NSW 2316

- Phone: +61 2 4982 2490

LAKESIDE PHARMACY

• Shop 13, 80 Benjamin Lee Drive, Raymond Terrace, NSW 2324

- Phone: +61 2 4987 5005

MEDOWIE PHARMACY

• Shop 17, Medowie Shopping Village, Medowie, NSW 2318

- Phone: +61 2 4982 8564

NELSON BAY PHARMACY

• Woolworths Shopping Centre, 1 Donald St, Nelson Bay NSW 2315

- Phone: +61 2 4981 1237

CAPITAL CHEMIST

• Shop 4, 34 Sturgeon St, Raymond Terrace, NSW 2324

- Phone: +61 2 4987 3466

SALAMANDER BAY AMCAL CHEMIST

• Shop 12, Salamander Bay Shopping Centre, Salamander Bay, NSW 2317

- Phone: +61 2 4982 7644

SHOAL BAY PHARMACY

• 59 Shoal Bay Rd., Shoal Bay, NSW 2315

- Phone: +61 2 4981 1247

WANDA BEACH PHARMACY

• Shop 2, 261 Soldiers Point Rd., Salamander

Bay, NSW 2317

- Phone: +61 2 4984 7936

Photo: Gemma Garner

Taxis



Taxis are available from Newcastle airport to Port Stephens, and within the region on call. NELSON BAY TAXIS 132 George Rd, Salamander Bay, Port

Stephens, NSW 2317

Ph: +61 2 4984 6699

NEWCASTLE TAXIS

3/7 Chaucer St., Hamilton, Newcastle, NSW
2300

Phone: +61 13 33 00

www.newcastletaxis.com.au

Photo: Arrival Guides

Telephone



Country code: (+61) Area
Code: (02)

Photo: Jardson Almeida

Electricity



220-240V

Photo: Stirling Tschan

Population

65,000 approx

Currency

1 Australian Dollar = 100 cents

Opening hours

Usually 9am – 5pm Monday to Saturday
Weekend hours can be restricted.

Internet

www.visitnsw.com/destinations/north-coast/port-stephens-area/

Newspapers

Newcastle Herald
The Port Stephens Examiner
The Sydney Morning Herald (NSW)
The Daily Telegraph (NSW)
The Australian (national)

Emergency numbers

Police, Fire, Ambulance 000

Tourist information

Port Stephens Visitor Information Office,
60 Victoria Parade, Nelson Bay, NSW 2315
Open 7 days a week from 9am – 5p.m.
Phone: +61 2 4980 6900 or 1800 808 900
info@portstephens.org.au
www.portstephens.org.au