



# Pinetop - Lakeside, Arizona

Photo: Annette Shaff/Shutterstock.com



Robert Tewart

Pinetop - Lakeside, Arizona, beckons visitors to “come celebrate the season.” This is fitting, for every season seems to smile upon the small town with ample sunshine in the summers and coquettish snow in the winters. People come each year to this veritable Promised Land of natural beauty. Outdoor activities abound: adventurers are fond of hiking, mountain biking, fly fishing, and trailblazing in the warmer months, and skiing and snowboarding in the cooler seasons.



TLPOSCHARSKY



Daxiao Productions/Shutterstock.com

## QUIZ

*What Type of Traveller  
Are You Based on  
Your Travel IQ?*

**TAKE THE QUIZ**

### Top 5



**Casa Malpais Ruins**

Home to the Mogollon Tribe, the Casa Malpais Ruins are also a national histo...



**Lyman Lake**

Adventurers are sure to find a home in Lyman Lake. The size of the beautiful...



**Fort Apache Historic Distr...**

Much of Arizona’s history is inlaid within the stories and histories of its ...



**High Pines Bluegrass Festival**

Located on the Hon-Dah Festival Grounds, the White Mountain Bluegrass Musica...



**Fall Artisan's Festival**

Come celebrate Pinetope - Lakeside’s artisan traditions with the Fall Festiv...



## THE CITY



Tim Roberts Photography/Shutterstock.com

In 1984, the town of Pinetop - Lakeside sprang into existence with an adjoining to the town of Lakeside. Located among the much-revered White Mountains, Pinetop - Lakeside has subsequently become a popular resort area for both residents and visitors. Lakes, forests, and snow-capped mountains make for a wealth of recreational activities.

It hasn't been all sunshine for the town, however. In 2002, a devastating forest fire forced Pinetop - Lakeside's residents to evacuate. They were quick to restore the damaged properties, nevertheless, and rebounded with panache.

## DO & SEE



the24studio/Shutterstock.com

Pinetop - Lakeside beckons with comfortable springs and summers and mild winters. Fly fishing, hiking, mountain biking, and exploring the forests and hills are favorite activities for the

warmer months. In the cooler temperatures, skiing and snowboarding the White Mountains is always a highlight. Nature enthusiasts will find Pinetop - Lakeside a Utopia.

## Casa Malpais Ruins



Home to the Mogollon Tribe, the Casa Malpais Ruins are also a national historic landmark. Acting as a shadowbox for the Mogollon, Sinagua,

Anasazi, and Hohokam tribes, the Ruins possess a history spanning 50,000 years (when the 16-acre pueblo was constructed over lava flows). Casa Malpais served as home to the various tribes between 1100 and 1400 A.D. Guided tours are available for your exploration.

Photo: teofilo (image cropped)

Address: 418 East Main Street, Springerville

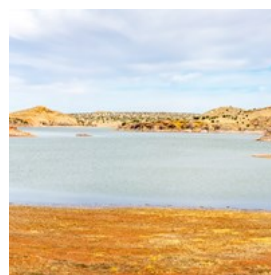
Opening hours: Monday - Saturday: 8am - 4pm

Phone: +1 928 333 5375

Internet: [www.casamalpais.org](http://www.casamalpais.org)

Email: [casa@springervilleaz.gov](mailto:casa@springervilleaz.gov)

## Lyman Lake



Adventurers are sure to find a home in Lyman Lake. The size of the beautiful lake allows it to accommodate any boat—regardless of its

size. There is an area that is declared "no wake" to enable fishing. Expect to see walleye, channel catfish, and largemouth bass. The remaining spaces of the lake are for watersports.

Photo: Jon Manjeot/Shutterstock.com

Address: Lyman Lake State Park, St. Johns

Phone: +1 928 337 4441

Internet: [www.azstateparks.com/parks/LYLA](http://www.azstateparks.com/parks/LYLA)

### Fort Apache Historic District Walking Tour



Much of Arizona's history is inlaid within the stories and histories of its Natives. The Apache Nation shares its own stories through the Fort

Apache Historic Park. 288-acres of the district comprise museums, historic buildings and spaces, recreational trails, and ancestral villages. There are also remnants of the US Calvary.

Photo: Hank Goede (image cropped)

Address: 127 Scout Street, Fort Apache

Opening hours: Daily: 7am - Sunset

Phone: +1 928 338 4625

Internet: [www.wmat.nsn.us/fortapachepark](http://www.wmat.nsn.us/fortapachepark)

More Info: Apache tour guides are available with advance reservation. Special accommodations and activities can be arranged for tour groups.

### High Pines Bluegrass Festival



Located on the Hon-Dah Festival Grounds, the White Mountain Bluegrass Musical Festival has become a marquee entertainment

event in Pinetop - Lakeside. Live music flows between the ponderosa pine trees at this outdoor setting. And the food court and craft booths only seek to supplement this one-of-a-kind blues festival.

Photo: Monkey Business Images/Shutterstock.com

Address: 777 Highway 260, Pinetop-Lakeside

Phone: +1 928 369 7576

### Fall Artisan's Festival



Come celebrate Pinetope - Lakeside's artisan traditions with the Fall Festival. There is anything from landscape painters and quilt

making, to sculptors, beadwork, metal work, and tole painting. Other events held over the weekend are parades, the Antique Show, Quilt Show, 10k Race, and the Run to the Pines Car Show.

Photo: BLUR LIFE 1975/Shutterstock.com

Address: Woodland Road, Pinetop-Lakeside

Phone: +1 928 367 4290

Internet: [www.pinetoplakesidechamber.com](http://www.pinetoplakesidechamber.com)

Email: [info@pinetoplakesidechamber.com](mailto:info@pinetoplakesidechamber.com)

### White Mountain Wildlife & Nature Center



At White Mountain Wildlife & Nature Center everyone finds something to do! The center organizes events for all ages but you can just

wander around the park and enjoy nature. Learn more about wildlife in the area and have dinner right under The Big Top.

Photo: Ermolaev Alexander/Shutterstock.com

Address: 425 S Woodland Ln, Pinetop

Phone: +1 928 358 0843

Internet: [www.whitemountainnaturecenter.org](http://www.whitemountainnaturecenter.org)

### Hon-Dah Casino



The White Mountain Apache Tribe owns and operates the dazzling Hon-Dah Resort and Casino. Blackjack and poker tables, along with

slot machines, make Hon-Dah the quintessential

entertainment hotspot. In addition to exciting play, live music and nightly dancing are featured. The Timbers Lounge holds comedy shows as well. Fine dining may be found onsite.

Photo: Andrei Pop/Shutterstock.com  
Address: 777 Highway 260, Pinetop-Lakeside  
Phone: +1 800 929 8744  
Internet: [www.hon-dah.com](http://www.hon-dah.com)

### White Mountain Symphony Orchestra

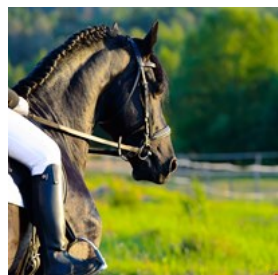


Orchestral performances are made far more memorable against the placid skies and mountainscape of Pinetop - Lakeside. With the

White Mountain Symphony Orchestra, you can indulge in exceptional music in an exceptional town. Concerts include dance troupes, choirs, collaborative performances, concertos, chamber music, and full orchestral works.

Photo: wmsconductor  
Address: 500 West Old Linden Road, Show Low  
Phone: +1 928 358 5629  
Internet: [www.wmso.webs.com](http://www.wmso.webs.com)

### Porter Mountain Stables



Voted as the number one stable in the whole area, Porter Mountain Stables offers you the unique opportunity to take a ride through creeks and

meadows while staring at beautiful lakes. Take a ride through the forest and relax.

Photo: Makarova Viktoria/Shutterstock.com  
Address: 3092 Jacks Rd, Lakeside  
Phone: +1 928 368 9599  
Internet: [www.portermtnstables.com](http://www.portermtnstables.com)  
Email: [stephanie@portermtnstables.co](mailto:stephanie@portermtnstables.co)

### Woodland Lake Park



Woodland Lake Park is a Mecca for the outdoors enthusiast. Tennis courts, volleyball courts, softball fields, hiking trails, equestrian trails, and

more can all be experienced at the park.

Woodland Lake itself is a haven for community events and gatherings. Come to bird-watch, picnic, grill, fish, or anything you can conjure up in the sun.

Photo: FamVeld/Shutterstock.com  
Address: 1360 North Niels Hansen Lane, Lakeside  
Opening hours: Daily: Sunrise - Sunset  
Phone: +1 928 368 5111  
Email: [lfrost@pinetoplakesideaz.gov](mailto:lfrost@pinetoplakesideaz.gov)

### Show Low Museum



Just a few minutes drive away from Pinetop-Lakeside, Show Low Historical Museum awaits for everyone! There are 2 different

buildings with 16 rooms where you can wander around learning some of the history of the area. Bring your family with you and share your own stories.

Photo: stevemart/Shutterstock.com  
Address: 561 E Deuce of Clubs 3, Show Low  
Opening hours: Wednesday - Saturday 10am - 3pm  
Phone: +1 928 532 7115  
Internet: [www.showlowmuseum.com](http://www.showlowmuseum.com)

### Sunrise Park Resort



If visiting Pinetop - Lakeside in the winter, come to Sunrise Park for skiing or snowboarding on one of the 65 trails or 3 mountains. During the summer months, hike, take advantage of the ski-lift rides, or fish!

Photo: Sorbis/Shutterstock.com

Address: Highway 273, Greer

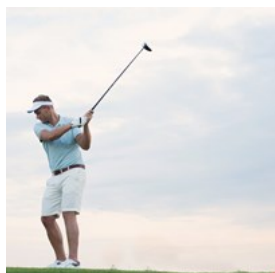
Opening hours: Daily: 10am - 4pm

Phone: +1 928 735 7669

Internet: [www.sunriseskiparkaz.com](http://www.sunriseskiparkaz.com)

Email: [info@sunriseskipark.com](mailto:info@sunriseskipark.com)

### Pinetop Lakes Golf & Country Club



The Pinetop - Lakeside Lakes Golf Course is ideally located in the cool White Mountains. This allows for comfortable, dry air for optimum play.

Both the course and clubhouse are available for group golf, seminars, dinners, cocktail parties, and even wedding receptions.

Photo: bikeriderlondon/Shutterstock.com

Address: 4643 Buck Springs Road, Pinetop

Phone: +1 928 369 4531

Internet: [www.pinetoplakesgolf.com](http://www.pinetoplakesgolf.com)

Email: [info@pinetoplakesgolf.com](mailto:info@pinetoplakesgolf.com)

### DINING



Robert Kneschke/Shutterstock.com

Pinetop - Lakeside has a pleasant variety of eateries. Regardless of the day's mood, there will be a restaurant to satisfy your palate. Steakhouses are the town's specialty, but Mexican, Italian, and Asian cuisine may be found as well!

### Chalet Restaurant & Bar



Chalet's offers fine dining spanning what seems to be every cuisine: fresh seafood, meat entrées, and a sushi bar complement their selection of chilled, red or house wines. Chef McCulloch even creates many of the sauces for the seafood entrées. The dinner entrées are all served with a choice of garden fresh salad or a cup of home-made soup, and one choice of either sautéed vegetables, fries, and a loaf of warm bread. The desserts are a favourite, with house-made specials like the Captain Morgan Rum Cake.

Photo: PRESSLAB/Shutterstock.com

Address: 348 West White Mountain Boulevard, Lakeside

Opening hours: Tuesday - Saturday: 5pm - 12am

Phone: +1 928 367 1514

Internet: [www.thechaletrestaurant.com](http://www.thechaletrestaurant.com)

### Charlie Clark's Steakhouse



Charlie Clark's has been preparing the finest in Mesquite-Broiled Steaks, Chicken, Prime Rib, and Seafood since 1938. Open to the White Mountains 7

days a week, 365 days a year, they strive to please all palates. Come experience the Early Bird, Lunch, Dinner, Dessert, and Happy Hour menus! There is also a bar and billiards area that airs sports networks.

Photo: stockcreations/Shutterstock.com

Address: 1701 East White Mountain Boulevard, Pinetop

Opening hours: Daily: 11am - 11pm

Phone: +1 928 367 4900

Internet: [www.charlieclarks.com](http://www.charlieclarks.com)

### El Rancho Restaurant



El Rancho has wrangled in "Best Mexican Restaurant" in Pinetop - Lakeside each year for over a decade. It's easy to see why after dabbling in

the appetizers or cheese crisps, but the El Rancho specialties are what drive it home. The venue is also proud of its tequila selection and house margaritas!

Photo: Valentina\_G/Shutterstock.com

Address: 1523 East White Mountain Boulevard, Pinetop

Opening hours: Monday - Saturday: 11am - 9am. Sunday: 12pm - 8am.

Phone: +1 928 367 4557

Internet: [www.elranchopinnetop.com](http://www.elranchopinnetop.com)

Email: [fredrica02@yahoo.com](mailto:fredrica02@yahoo.com)

### Red Devil



Red Devil is an Italian restaurant and pizzeria. Since 1960, the restaurant has been a fixture for genuine Italian cuisine with a staple of

delicious pizza. Stop by with your friends on the way and put something yummy in your tummy!

Photo: El Nariz/Shutterstock.com

Address: 1774 East White Mountain Boulevard, Pinetop

Opening hours: Sunday - Thursday: 11am - 8pm. Friday - Saturday: 11am - 9pm.

Phone: +1 928 367 5570

Internet: [www.reddevilrestaurant.com](http://www.reddevilrestaurant.com)

Email: [info@reddevilrestaurant.com](mailto:info@reddevilrestaurant.com)

### Lotus Garden Chinese Restaurant



Consistently rated the "Best Asian Restaurant" in the region, Lotus has a lunch buffet as well as lunch combinations. The restaurant is open 7 days

a week so if you are longing for some Asian food, don't hesitate to visit!

Photo: Joshua Resnick/Shutterstock.com

Address: 984 East White Mountain Boulevard, Pinetop

Opening hours: Sunday - Thursday: 11am - 9:30pm. Friday - Saturday: 11am - 10pm.

Phone: +1 928 367 2568

Internet: [www.lotusgardeninpinetop.com](http://www.lotusgardeninpinetop.com)

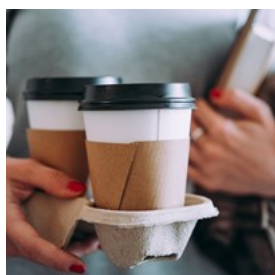
## CAFES



Infomastern (image cropped)

Cozy up with a cup of coffee and a pastry in between skiing the slopes or fishing the lakes of Pinetop - Lakeside. There are even tea houses available. Diners are included in the listings.

### YoSippity



For good coffee and a quick pick-me-up, stop by at YoSippity. If you are traveling with kids, don't forget to order them the amazing hot chocolate to make them satisfied - they will love it! As for yourself, the hot coconut mocha could be the choice.

Photo: Yulia Grigoryeva/Shutterstock.com

Address: 19 East White Mountain Boulevard, Lakeside  
Phone: +1 928 367 6451

### The Pinetop Coffee House & RGB Roasting Company



This coffee house awaits you not only with amazing coffee but also with warm and welcoming atmosphere. The barista and the rest of the staff are friendly and they make sure you get the best coffee and baked goods of your choice. They also have some amazing smoothies

so give them a try!

Photo: Ermak Oksana/Shutterstock.com

Address: 857 E White Mountain Blvd, Pinetop-Lakeside

Opening hours: Mon - Saturday: 6:30 am - 4pm Sunday: 7am - 1pm

Phone: +1 928 458 0516

Internet: [www.pinetopcoffeehouse.com](http://www.pinetopcoffeehouse.com)

### Darbi's Cafe



As one of the White Mountains' own signature cafes, Darbi's is a local gem. Full breakfast is served, offering delicious plates like the Florentine Eggs Benedict and Wild Berry Stack. For dinner, Charbroiled Burgers and Chicken Breast come secondary to entrees like the Housemade Meatloaf and Battered Cod. They also have a full bar menu.

Photo: Aneta\_Gu/Shutterstock.com

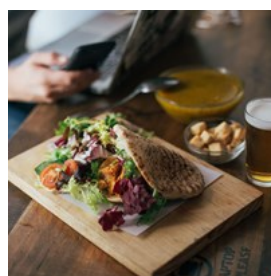
Address: 235 East White Mountain Boulevard, Pinetop

Opening hours: (Breakfast) Daily: 6am - 12pm. (Lunch & Dinner) Daily: 11am - Closing.

Phone: +1 928 367 6556

Internet: [www.darbiscafe.com](http://www.darbiscafe.com)

### PersNIKKlty's Café and Bakery



PersNIKKlty's is a quirky and delicious café and bakery. Sandwiches, gourmet salads, and "Hand Pressed Certified Angus Beef Mile High Burgers" are favorites. The full espresso bar pairs nicely with the complimentary Wi-Fi, making the café perfect for business meetings or those looking to pass the time.

Photo: BublikHaus/Shutterstock.com

Address: 1650 East Deuce of Clubs, Show Low

Opening hours: Monday - Saturday 07.00am - 03.00pm;

Friday Fish Fry 04:45pm - 08.00pm  
Phone: +1 928 251 1965  
Internet: [www.persnikkityscafe.com](http://www.persnikkityscafe.com)

## BARS & NIGHTLIFE



*thanosquest/Shutterstock.com*

While not a town to turn heads for a club scene, Pinetop - Lakeside does possess a collection of bars and lounges. Most of them have their own breweries as well.

### The Beverage House



The Beverage House serves an impressive selection of fine wines, liquors, liqueurs, and microbrews. Both domestic and imported liquors and spirits may be found, and a selection of cheeses is offered to pair with the wines. Over 60 French, Italian, European, and Custom cheeses are available.

Photo: Brent Hofacker/Shutterstock.com  
Address: 857 East White Mountain Boulevard 4, Pinetop  
Opening hours: Tuesday - Saturday: 08.00am - 10.00pm;  
Sunday: 08.00am - 09.00pm  
Phone: +1 928 367 9009  
Internet: [www.beveragehouse.net](http://www.beveragehouse.net)  
Email: [info@beveragehouse.net](mailto:info@beveragehouse.net)

### The Lion's Den



The Lion's Den Bar & Grill has 10 flat-screen televisions to show the big games from every sport. Along with serving up favorites like the Wineburger, they feature a fine wine list, beer on tap, and Happy Hour. Patrons are also welcomed to take advantage of the complimentary Wi-Fi. Live entertainment every Friday and Saturday night.

Photo: [welcomia/Shutterstock.com](http://welcomia/Shutterstock.com)  
Address: 2408 East White Mountain Boulevard, Pinetop  
Opening hours: Monday - Sunday 10.00am - 02.00am  
Phone: +1 928 367 6050  
Internet: [www.thelionsdenpinetop.com](http://www.thelionsdenpinetop.com)

### Indian Pine



The Indian Pine at the Hon-Dah Casino features live entertainment and amazing food. Concerts are also held on the Festival Grounds during the summer season, and free stand-up comedy takes to the stage every Monday night.

Photo: [Nata789/Shutterstock.com](http://Nata789/Shutterstock.com)  
Address: 777 Highway 260, Pinetop-Lakeside  
Phone: +1 800 929 8744  
Internet: [www.hon-dah.com](http://www.hon-dah.com)

### Moose Henri's Grille, Corks & Taps



Big screen televisions, complimentary Wi-Fi, and 30 different micro-brews make Moose Henri's a great option to catch the big game or relax with friends. The food is nothing to thumb your nose at, either: try the House Specialty Kabobs, 1/2 lb



Angus Burger, Chimichurri Chicken, Italian Beef, Sirloin Steak, Swordfish Steak, Salmon Filet, and many others.

Photo: Ilya Zlatyev/Shutterstock.com

Address: 4207 Highway 260 White Mountain Boulevard, Lakeside

Opening hours: (Happy Hour) Monday - Saturday: 2:30pm - 5pm. Sunday: 10am - 5pm.

Phone: +1 928 368 5127

Internet: [www.mooshehenris.com](http://www.mooshehenris.com)

### Pinetop Brewing Co.



Pinetop Brewing Co.'s motto is "Small Town, Big Beer." This is fitting, for every two weeks the head brewer does 2 batches of new beers. Try everything

from Scottish Ale, Irish Red, Honey Wheat, and IPA.

Photo: Kzenon/Shutterstock.com

Address: 159 West White Mountain, Pinetop-Lakeside

Opening hours: Sunday - Monday & Thursday 11.00am - 10.00pm; Friday - Saturday 11.00am - 12.00pm

Phone: +1 928 358 1971

Internet: [www.pinetopbeer.com](http://www.pinetopbeer.com)

### The Lodge Sports Bar & Grill



The Lodge is known more for its bar and billiards than its food. The staff is friendly and always ready for a fun conversation so

drop by and have a great time.

Photo: Mikadun/Shutterstock.com

Address: 857 East White Mountain Boulevard, Pinetop

Opening hours: Sunday - Wednesday 11.00am - 01.0am; Thursday - Saturday 11.00am - 02.00am

Phone: +1 928 358 4602

Internet: [www.facebook.com/thelodgesportsbarandgrill](http://www.facebook.com/thelodgesportsbarandgrill)

## SHOPPING



Andresr/Shutterstock.com

The shopping in Pinetop - Lakeside revolves around equipping visitors for the outdoors. Winter and summer apparel and merchandise are popular finds. Smaller boutiques provide fashionable attire.

### Pinetop Star



Pinetop Star is a great store for all the lovers of vintage furniture.

Wardrobes, tables, chairs, window panes, old books and even tablecloths are

available at the store. Step in to get some gifts for your loved ones or for yourself.

Photo: AnastasiaNess/Shutterstock.com

Address: 103 W Yeager Ln, Lakeside

Phone: +1 928 367 1709

### The Burly Bear



The Burly Bear is the perfect store from which to head home with a great Pinetop - Lakeside souvenir. All items sold are custom chainsaw

carvings, whether it be mountain gifts or furniture. There's something for every room of the house or office.

Photo: marilyn barbone/Shutterstock.com

Address: 1665 East White Mountain Boulevard, Pinetop

Opening hours: Monday - Friday 10.00am - 05.00pm;

Saturdays 10.00am - 06.00pm

Phone: +1 928 367 2327

Internet: [www.theburlybear.com](http://www.theburlybear.com)

Email: [info@theburlybear.com](mailto:info@theburlybear.com)

### Amazing Quilts



If you like giving away homemade gifts, making a special quilt or wall-hanging could be something for you. Drop in the Amazing Quilts

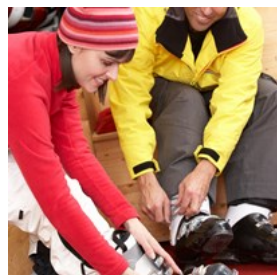
shop and find everything you need; from fabrics to machines. You can even participate in a class or just sit by a Janome machine and work on a potholder!

Photo: true nature/Shutterstock.com

Address: 2964 W White Mountain Blvd, Lakeside

Phone: +1 928 368 5567

### Krissies Ski & Board Shop



Before taking to the beautiful White Mountains, stop at Krissies Ski & Board Shop to rent premium equipment and gear.

There are over 1,000 sets of equipment, ensuring that even the most unique of needs may be met.

Photo: Monkey Business Images/Shutterstock.com

Address: 713 East White Mountain Boulevard, Pinetop

Opening hours: Monday - Friday: 8am - 6pm. Saturday -

Sunday: 7am - 6pm.

Phone: +1 928 367 7051

Internet: [www.krissiesskiandboard.com](http://www.krissiesskiandboard.com)

Email: [KrissiesSkiSM@gmail.com](mailto:KrissiesSkiSM@gmail.com)

### The Gingerbread Cabin



The Gingerbread Cabin is like heaven for those who love the holiday season. Step in to get some fresh, homemade fudge; pick out the best Christmas card for your loved ones and get onto the festive mood by trying on Christmas clothes as well.

Photo: Olyina V/Shutterstock.com

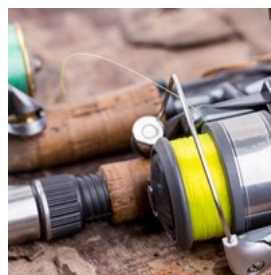
Address: 1465 E White Mountain Blvd, Pinetop

Opening hours: Monday - Saturday 09.00am - 06.00pm;

Sunday 10.00am - 05.00pm

Phone: +1 928 367 1000

### Hon Dah Ski & Outdoor Sport



If visiting Pinetop - Lakeside for the spring or summer, then come to Hon-Dah for all your fishing supplies. They carry specialty fishing and fly-fishing equipment. For the cooler months, Hon-Dah also carries over 1,000 ski rentals and 300 snowboard rentals. They do custom boot fitting with custom molded foot beds.

Photo: dasytnik/Shutterstock.com

Address: 777 Highway 260, Pinetop

Phone: +1 928 369 7669

Internet: [www.hon-dah.com/ski-outdoor](http://www.hon-dah.com/ski-outdoor)

Email: [skisport@hon-dah.com](mailto:skisport@hon-dah.com)

### Echo Consignment Boutique



Echo Consignment Boutique offers you not only brand new but recycled clothes and jewelry as well. It does not matter what is the occasion you are trying to find clothes for, this store has it for you for sure. Great quality and

fun shopping is guaranteed at Lori's Echo Boutique.

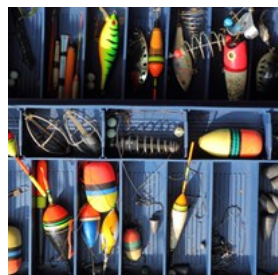
Photo: nito/Shutterstock.com

Address: 1449 E White Mountain Blvd, Pinetop

Phone: +1 928 367 2003

Internet: [www.echoboutique.net](http://www.echoboutique.net)

### Paradise Creek Anglers



Are you heading to any of the 40 lakes in the area to spend some time by fishing and relaxing? Stop by Paradise Creek Anglers on the way and

buy all the missing pieces of your fishing equipment. They will make sure you get the right things!

Photo: ArnonLee/Shutterstock.com

Address: 560 W White Mountain Blvd, Pinetop

Phone: +1 928 367 6200

Internet: [www.paradisecreekanglers.com](http://www.paradisecreekanglers.com)

## TOURIST INFORMATION



*PDTillman (image cropped)*

## Airport



The airport serving Pinetop - Lakeside is Phoenix Sky Harbor International Airport. All major U.S. airlines, plus Air Canada, British

Airways, WestJet, and Aeromexico operate out of PSHIA. Nonstop service is available to roughly 80 domestic and 20 international destinations. The airport is 3 miles (4.8 km) from the central business district with the Valley Metro bus route 13 serving all terminals. Taxi access is through terminals 2, 3 and 4. SuperShuttle provides collective transportation. The Rental Car Center is located in its own building at 1805 East Sky Harbor Circle South.

Photo: Juan Garces

Address: Phoenix Sky Harbor International Airport, Phoenix

Phone: +1 602 273 3300

Internet: [www.skyharbor.com](http://www.skyharbor.com)

## Time Zone



Pinetop - Lakeside is located in the Mountain time zone, and all times are reflected in Mountain time.

Photo: Marek Polakovic

## Public Transport



The Navajo County White Mountain Connection connects Pinetop - Lakeside NPC, Show Low, Snowflake, Taylor and Holbrook, providing 3 trips a day, Monday through Friday. Most stops are located in parking lots.

Photo: Pierre-Luc Auclair  
Phone: +1 928 537 0627  
Internet:  
[az-showlow.civicplus.com/DocumentCenter/View/204](http://az-showlow.civicplus.com/DocumentCenter/View/204)

## Taxi



The following taxi services are available for the Pinetop - Lakeside area: Mountain Cab +1 928 368 8555 Brad's Cab +1 928 242-3151 Sunny

Side Taxi +1 928 207 5372

Photo: ArrivalGuides

## Post



US Post Office serves Pinetop - Lakeside, with the main office located on the highway from which you can post letters or postcards and buy

stamps.

Photo: Andy Fuchs  
Address: 712 East White Mountain Boulevard, Pinetop, AZ 85935  
Opening hours: Monday-Friday 8:30am - 4:30pm Saturday 11:30am - 2:30pm  
Phone: +1 928 367 4756  
Internet: [www.uspspostoffices.com](http://www.uspspostoffices.com)

## Telephone



Country Code: +1 Area Codes in Pinetop - Lakeside: 928

Photo: Jardson Almeida

## Electricity

110V AC, 60Hz



Photo: Stirling Tschan

**Population**  
4,156

**Currency**  
\$1 U.S. = 100 cents

**Opening hours**  
General store hours are from 10am until 9pm.

**Newspapers**  
White Mountain Independent  
Chronicle of The Old West  
Pioneer Newspaper  
Arizona Republic

**Emergency numbers**  
911

**Tourist information**  
Pinetop-Lakeside Chamber of Commerce  
102-C W. White Mountain Boulevard  
Lakeside

+1 928 367 4290