



# UMAID BHAWAN PALACE

## JODHPUR



# Jodhpur

The Royal Blue City

UMAID BHAWAN PALACE, JODHPUR

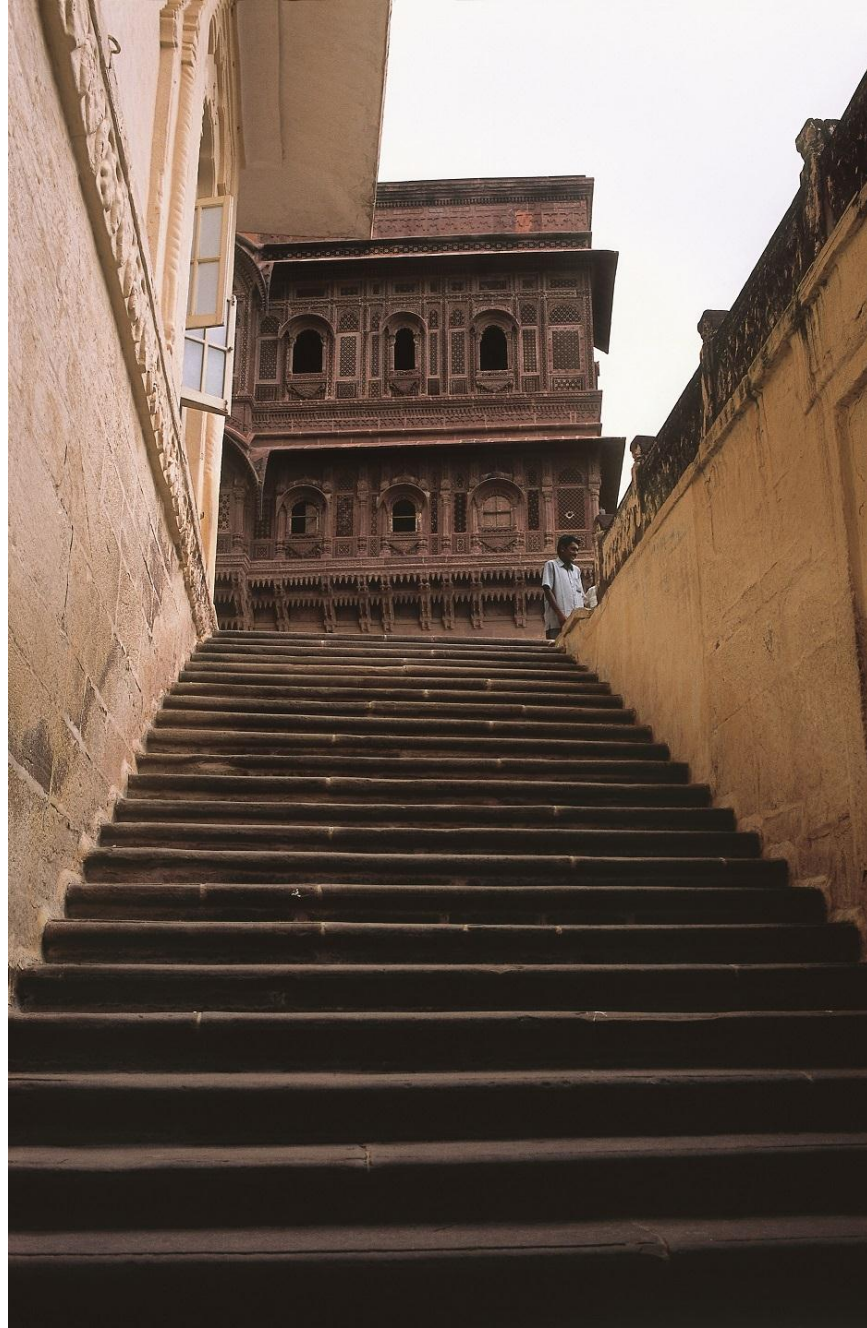


# JODHPUR

Jodhpur has historically been the capital of the kingdom known as Marwar, which is now part of Rajasthan. It is a popular tourist destination, featuring many palaces, forts and temples, set in the stark landscape of the Thar Desert

The old city circles the fort and is bounded by a wall with several gates. However, the city has expanded greatly outside the wall over the past several decades.

Jodhpur is the second largest city in the Indian state of Rajasthan and officially the second metropolitan city of the state



UMAID BHAWAN PALACE, JODHPUR



# Maharaja Umaid Singh Ji

(8<sup>th</sup> July,1903 - 9<sup>th</sup> June,1947)

He was the successor of Maharaja Sumer Singh in 1918.

The Young prince was educated first at Rajkumar College in Rajkot, and then at Mayo College in Ajmer.

In 1921, he married Badan Kanwar, daughter of Thakur Jai Singh Bhati of Osian.

An Avid flyer who was bestowed the title air marshal, it was his reserent less efforts that made JFC Air Force Station the gateway to far east by 1938.

In 1924, he established the Jodhpur aerodrome. In 1931 he founded the Jodhpur Flying Club.

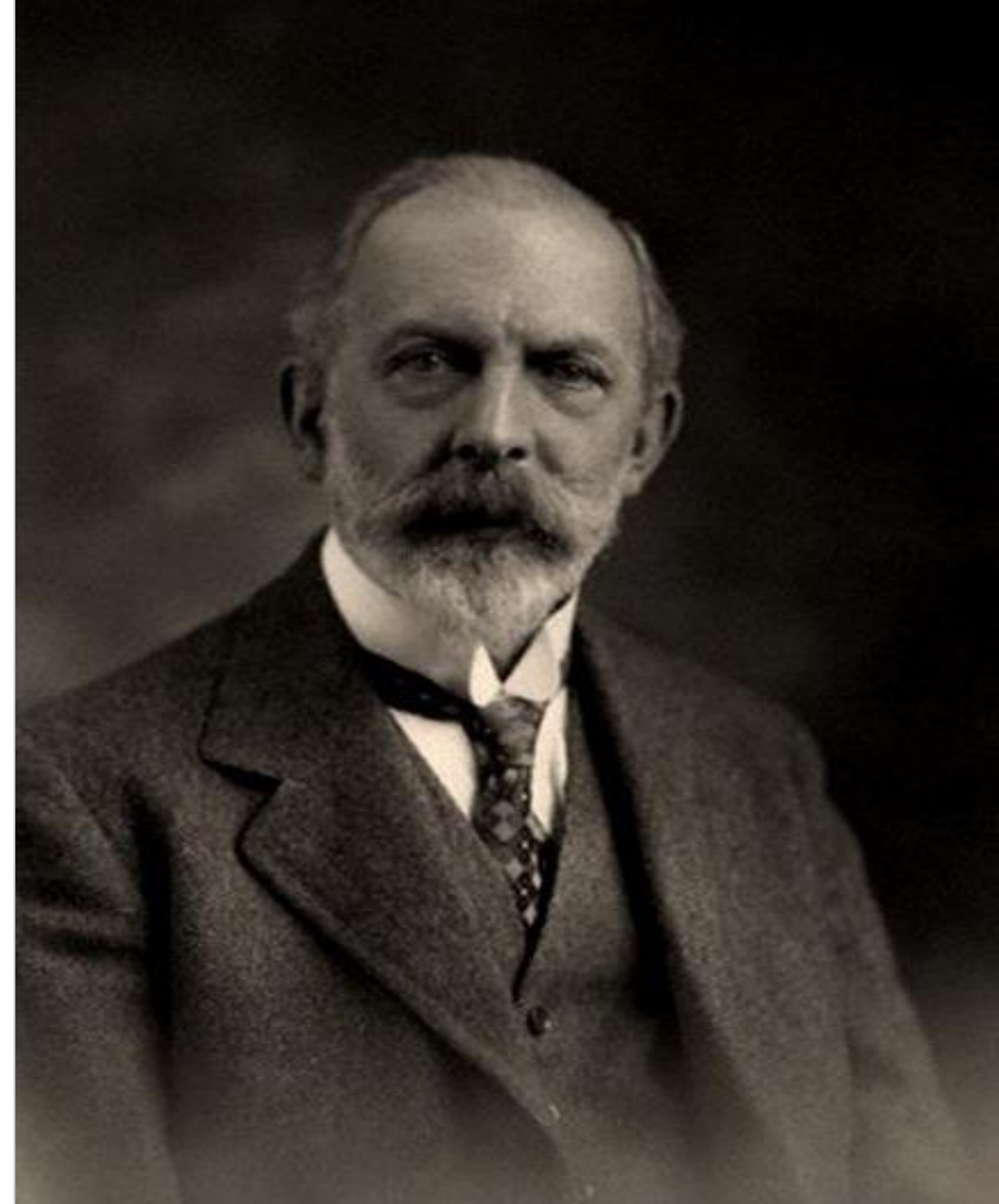
In 1929, he laid the foundation stone for his “Chittar Palace”, later to be known as Umaid Bhawan Palace.





# Henry Lanchester

- Henry Lanchester was an British architect from London.
- Lanchester patterned the Umaid Palace on the lines of the New Delhi building complex by adopting the theme of domes and columns.
- The palace was designed as a blend of western technology and Indian architectural features.
- He began work on the design soon after his meeting with maharaja in London.
- The models for the ornamental carving were provided by F.L. Roslyn and the contractor was Martin & Co. of Calcutta.
- He was Awarded with Royal Gold Medal in 1934 for recognition of high architectural merit for Umaid Bhawan Palace.





# Inspiration



Angkor Wat Temples



Taj Mahal





UMAID BHAWAN PALACE, JODHPUR

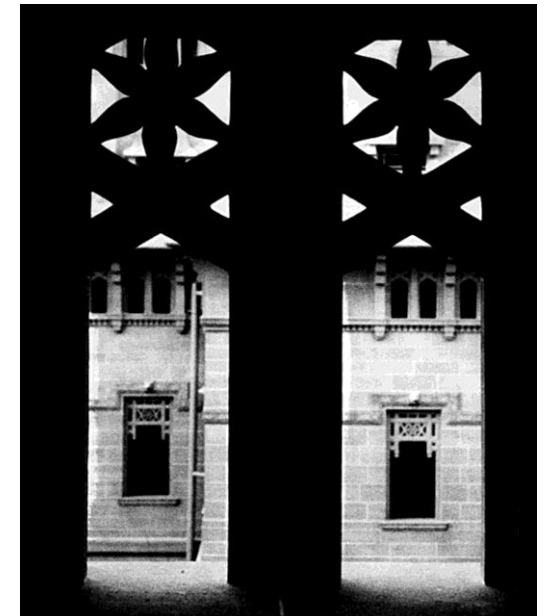






# Art Deco Influences

- The palace has a very big influence of Art Deco which was the prevalent art movement of the 1920's and the 30's.
- This Architectural movement of the jazz age created new streamlined and curvaceous forms. When the same aesthetic was applied to the more traditional forms of classical architecture, they came out looking trimmed, bold and taut.
- Also its style is a unique blend of European Classical, Art Deco and Indian Forms, and some aspects of its layout also draw on Indian ideas in unusual ways.
- There is an eclectic mixture of neo-classical and Indian forms, but all re-interpreted and turned into something new.
- "Indo Deco" is the term used to describe Umaid Bhawan.



## About Us

- Built between 1928 and 1943, Umaid Bhawan Palace is a magnificent piece of Rajasthan's heritage, and a symbol of new Jodhpur.
- Home of the erstwhile Jodhpur royal family and currently the world's sixth-largest private residence, the palace has one thing in common with the iconic Taj Mahal at Agra—the palm court marble used in its construction.
- Perched on Chittar Hill, the highest point in Jodhpur, Umaid Bhawan Palace inspires with exotic views of the historical Blue City, vast sand dunes, and intimidating Mehrangarh Fort.
- The Palace is conveniently located 20 minutes from the airport, close to the main shopping areas, and the Balsamand and Kalyana lakes.
- Foundation Stone was not laid until 18 November, 1929. Thereafter 3000 workmen laboured for over 14 years to complete the work, at a total cost of Rs. 94,51,565.





# Maharaja Welcome

















## Palace Room (#26)



Embellished with Art Deco interiors and equipped with modern conveniences, these rooms meet the expectations of the modern traveller even as they offer a glimpse into a privileged bygone lifestyle.



## Historical Suite (#26)



The Regal Suites, designed in Art Deco style, were once reserved for visiting royalty. Each suite is different, with subtle underlying themes of a favourite colour or princely passion. These suites have a private sit-out with stunning palace views of the panoramic lawns or courtyards.



## Royal Suite (#10)



These suites overlook the well-laid out gardens of the palace (in the mornings peacocks strut on the lawns); and in the distance the city and the spectacular Mehrangarh Fort, perched atop a hill. Since the palace is built with a melding of Art Deco and Indian elements, these design styles run through these suites. Paintings of Marwar/Jodhpur royalty and nobility adorn the walls and herald a regal welcome for those entering this space. A mock fireplace adds to the sense of drama of these suites.



## Grand Royal Suite (#06)



The Grand Royal Suites were once reserved for the visiting royalty. Each suite is different with unique themes of Maharaja's favorite color or princely passion and offers a Garden & Courtyard view. These suites are exclusively located beneath the largest dome of Rajasthan on the Palace's Regal Wing.



## Grand Presidential - Maharaja Suite



The Maharaja Suite, once Maharaja Umaid Singh's private chamber exudes a masculine panache with dramatic Stefan Noblin's frescoes of leopards, tigers, horses and monumental art deco furnishings.



## Grand Presidential - Maharaja Suite Private Spa



It includes a living area with a charming secret bar, a dining area, a spa therapy room, a luxurious bathroom with adjoining steam room and a large verandah which overlooks one of the palace courtyards.



## Grand Presidential - Maharani Suite



The Maharani Suite, originally designed for and graced by Maharani Badan Kanwar, is aptly dominated by a Norblin mural of the Goddess Kali etched on shining black glass. All in pink, black, chrome and mirror, the suite includes spacious private drawing and dining rooms with an attached kitchenette, a large balcony with a spectacular view of the palace gardens and the Mehrangarh Fort.



## Grand Presidential - Maharani Suite Private Spa



A dressing room with a wardrobe, Private Spa and a bath carved out of a single piece of pink Italian marble designed by Stefan Norblin.







## Pillars – All Day Dining Restaurant



The Charming Restaurant and coffee shop, located in the western rear veranda of the palace, offers a spectacular view of the gardens, the city, and the magnificent Mehrangarh Fort. The sunset views are particularly stunning.



# Risala



Risala, meaning cavalry, celebrates the acclaimed victory of the Jodhpur Lancers against the Turks at Haifa in 1918. The walls are graced by beautiful royal and martial portraits in the Royal Collection. The imaginative 'fusion' menu of Continental and Indian specialities is complemented by a wide selection of fine imported and domestic wines.



## Trophy Bar



Elephant-foot stools with tiger skin cushions, gazelles, bears, large wild boar tusks, binoculars and a collection of fishing gear along with hunting, fishing and pig-sticking memorabilia recall the lifestyle of the maharajas. The bar serves cocktails, spirits, wines, beers and other beverages.







## Baradri Dining

Baradari literally means 12 pillars. This marble epitome stands imposing in the heart of the lawns with a breath taking view of the illuminated Palace and the Fort.

The guests walk down the shimmering candle lit pathway enjoying the grandeur of the lush green setting and dainty fairy lights twinkling in the flower bushes. Above the guests, soar the magnificent turrets of the palace and in the distance, atop the hill, stands the imposing Mehrangarh Fort, floodlit, surreal and tantalizingly inviting.

In this enchanted palace, folk dancers entertain guests creating the imperative ambience. Guests are ushered by traditionally turban clad attendants to the dining area laced with the household silver ware, to enjoy the princely dining experience.

Amid the performance, drinks and snacks are served with a Royal Flourish. In succession to the half an hour of cocktail service, the guests are served the Silver Thali and are serenaded by the eminent Rajasthani musicians, embracing Sitar & Tabla and playing soulful tunes of the desert.





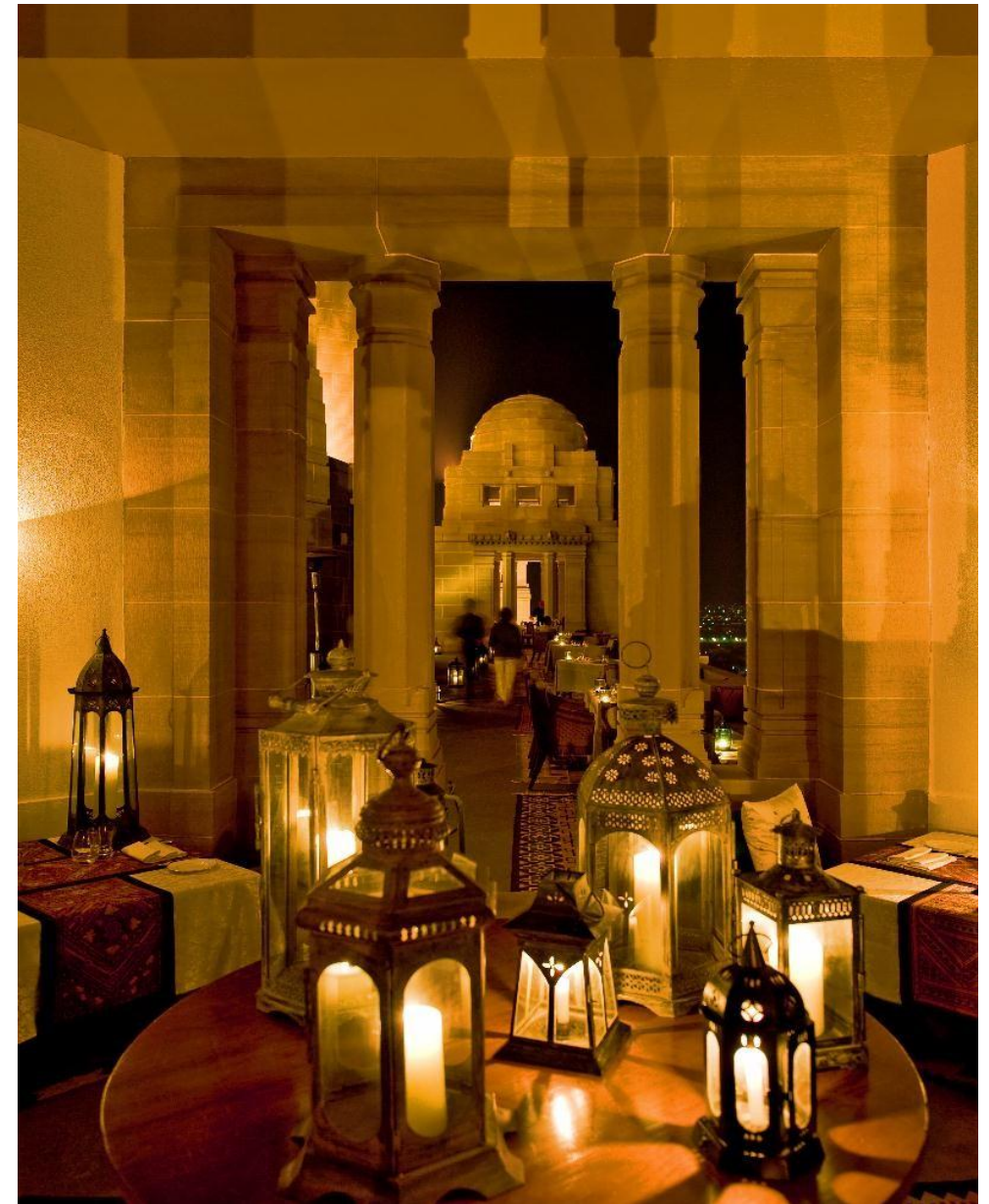
## Sunset Pavilion

Get captivated by the panoramic views of the twinkling blue city of Jodhpur, regal Mehrangarh Fort and verdant Baradri lawns and colorful bougainvillea's.

Perched high above the desert capital of Jodhpur, Umaid Bhawan Palace is the last of the great palaces of India and one of the largest private residences in the world – set amidst 26 acres of lush gardens.

The Sunset Pavillion is brain child of His Highness Maharaja of Jodhpur; guests are taken in 1940s elevator with carved wood interiors and they make their way through the “Whispers” gallery to begin their journey , The walls have some unique and never before seen pictures of Royal Family, Hunting Tradition, Vintage Cars and Jodhpur Flying Club.

The terrace is the highest dining point in Palace and done up with all embellishments and motifs from Jodhpur city. Sunset Pavilion can accommodate 30 covers or a be it a private dinning.



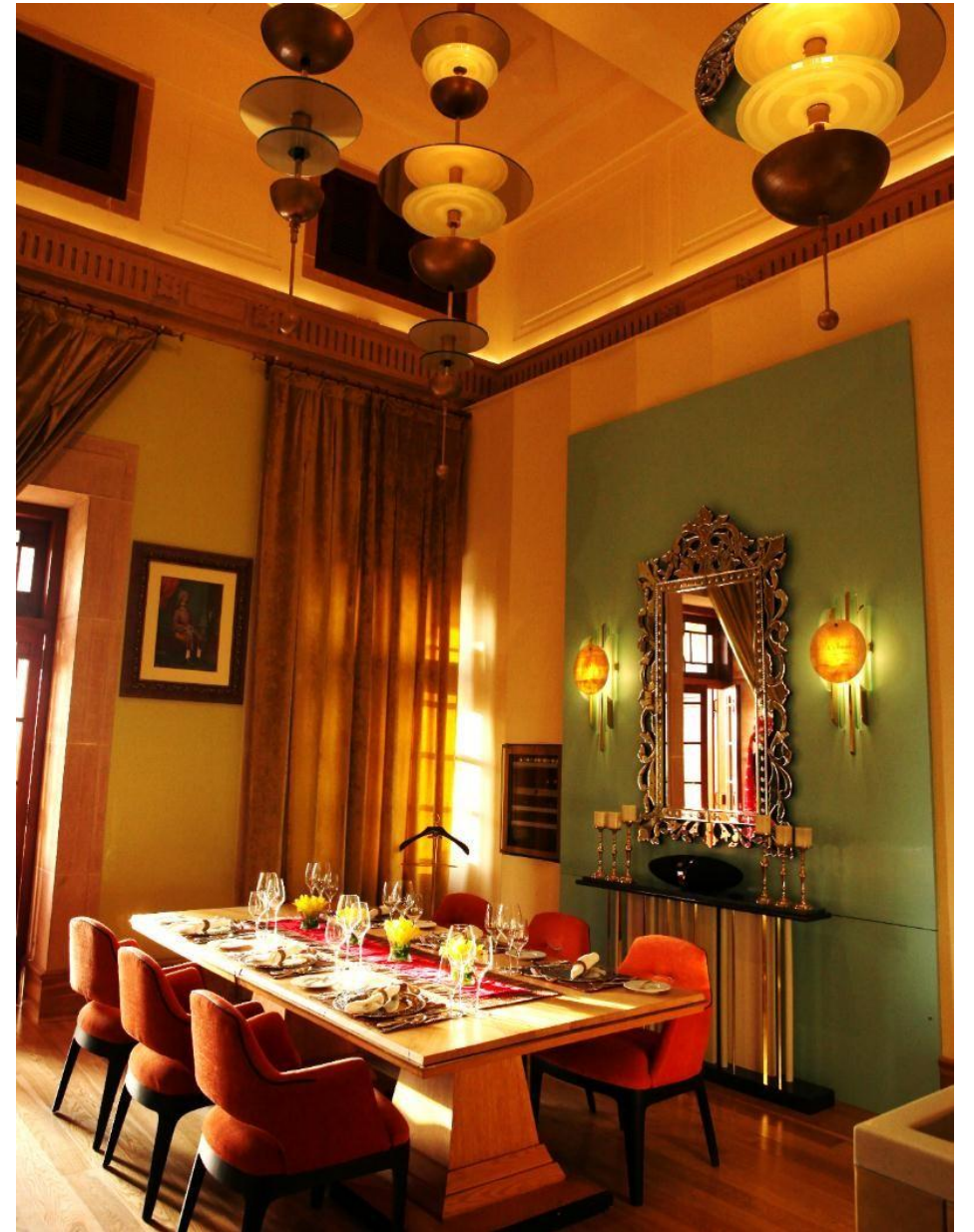


# Chef's Studio

Chef's Studio takes you to an enticing and an exciting journey of the culinary world. With demonstration, cook along with our expert chefs on world cuisine.

Conceptualized by His Highness of Jodhpur and created to deliver personalized touch and attention at Chef's Studio, our endeavor is to bring for our guests the finest in Local and International culinary experience on their table.

Culminate the spectacular an all-embracing dining experience with celebration to remember at the Trophy Bar of the Palace, a toast to tantalizing taste buds.





## Meherangarh Fort – Marwar Gala

Built around 1460 by Rao Jodha, Mehrangarh Fort is one of the largest forts in India and is situated at 410 feet (125 m) above the city and enclosed by imposing thick walls. Inside its boundaries there are several palaces known for their intricate carvings and expansive courtyards.

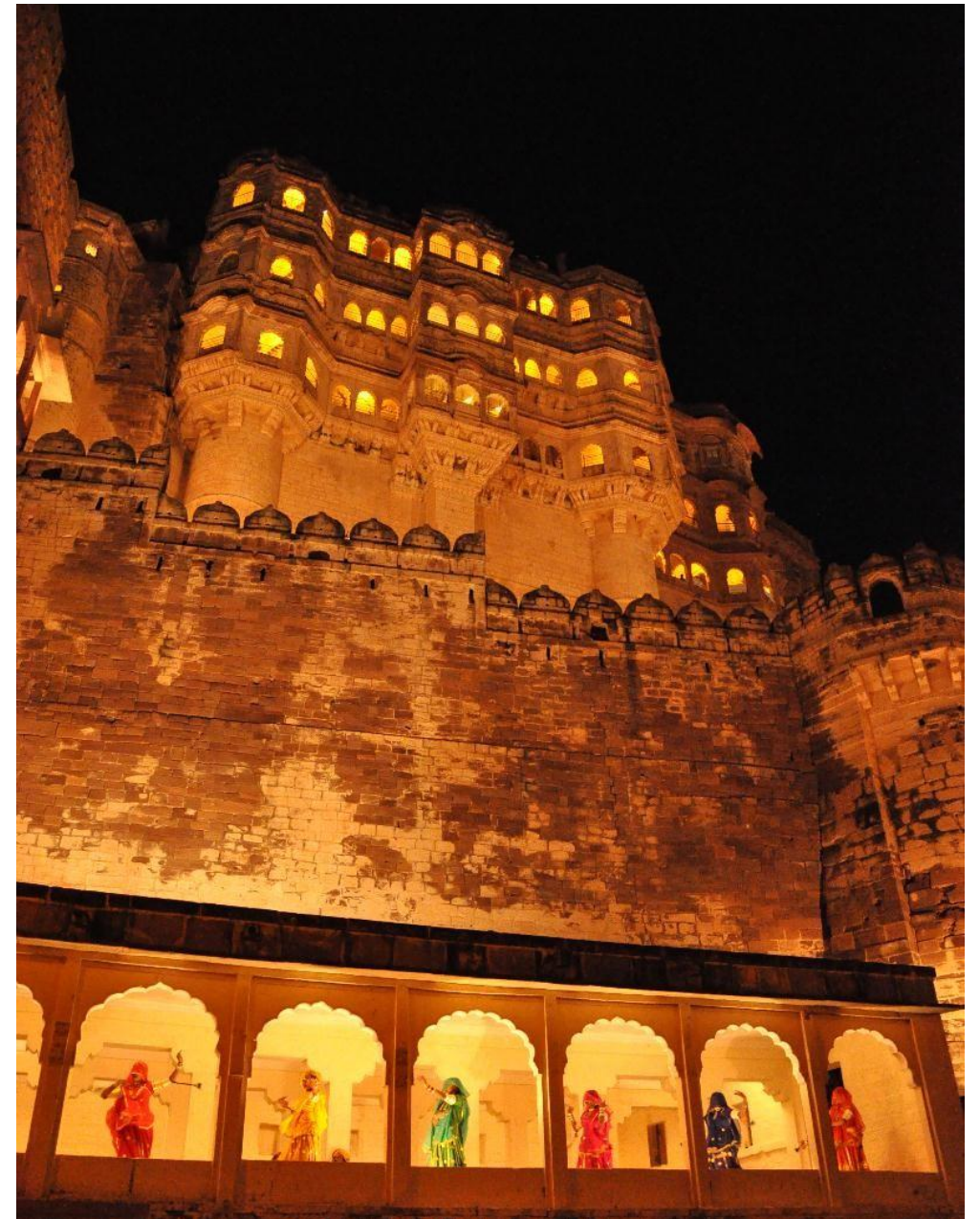
Guests are received at the fort with guards in ceremonial attire and a traditional welcome of “Dhol Thali” “Kachi Ghodi” performance up to the lift veranda. Served welcome drinks; meanwhile “safas” are tied to the gentlemen and “chunnis” offered to the ladies. Subsequent to the welcome drinks, the procession begins up the fort walkway led by Mashal bearers and Musicians (with Dhol, Pipe, Kamaicha, Sindhi & Sarangi) lead in two lines the procession, until “Suraj Pol” where a full bar setup can be arranged including a performance of “Tera Tali” (lasts for 10 minutes roughly).

War drums are played at Rao Jodhaji ka Falsa, lead by “Dhol Thali” and the procession passes Nagnechia Temple where “Ravan Hatha” is being played.

On reaching the stair case - the “Dhol Thali” stops at the steps and play on low pitch until the procession goes up towards the “Fateh Mahal”. Here guards in traditional dress lead the procession and stop one by one near each cannon.

The Rajasthani entertainment will consist of Ghoomar Dance, Ghair Dance, Cheri Dance and Langa Musicians who plays traditional Rajasthani music/songs amid the performances.

An extravagance of entertainment, the procession winds its way up watching a kaleidoscope of events unfold before guests, 500 years of history coming alive with every nook and cranny lit up and a surprise at every corner. Folk music and dance performance in alcoves where only eagles would dare!





# Fountain Courtyard

This beautiful venue is surrounded by tall pillars on two sides and a marble fountain in the centre of the courtyard and adjacent to the Marwar Hall.

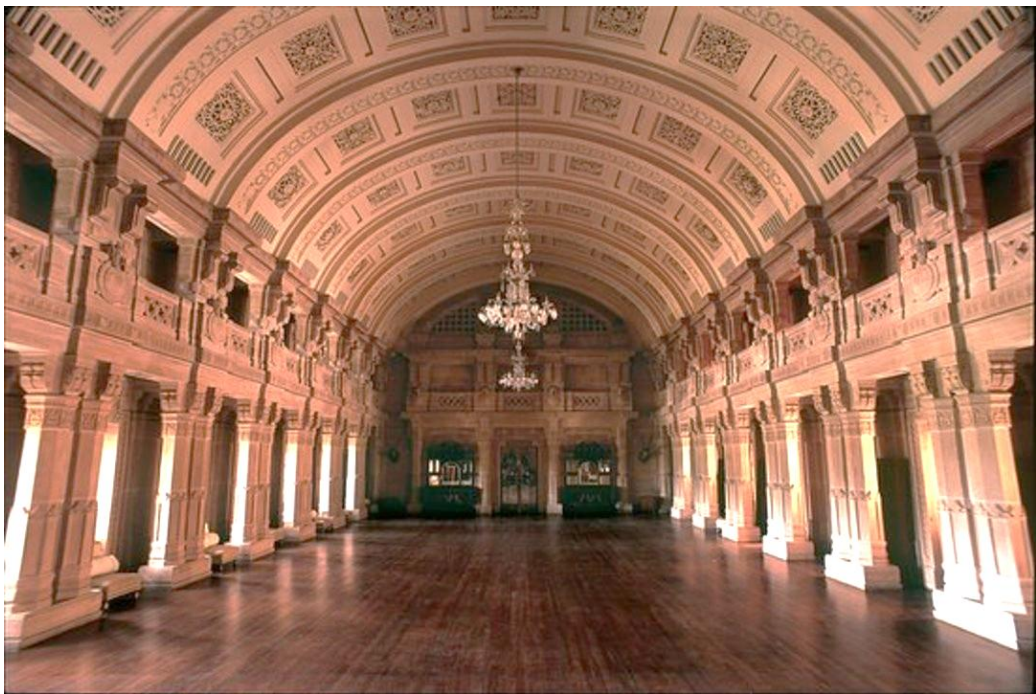
This open but private venue is ideal for cocktails & dinner with entertainment. Colorful buntings, folk performers. Venue is done up with comfortable seating on hand woven furniture, Muddas and bolsters, cushions and soft under lays besides formal dining seating.

The local bazaar created around allows you to appreciate the traditional art and craftsmanship of Rajasthan like lac bangles, Mojris ( traditional camel leather shoes ), safa's , and Itar ( Indian perfumes ) and the local cuisine that follows is to satisfy your taste buds.





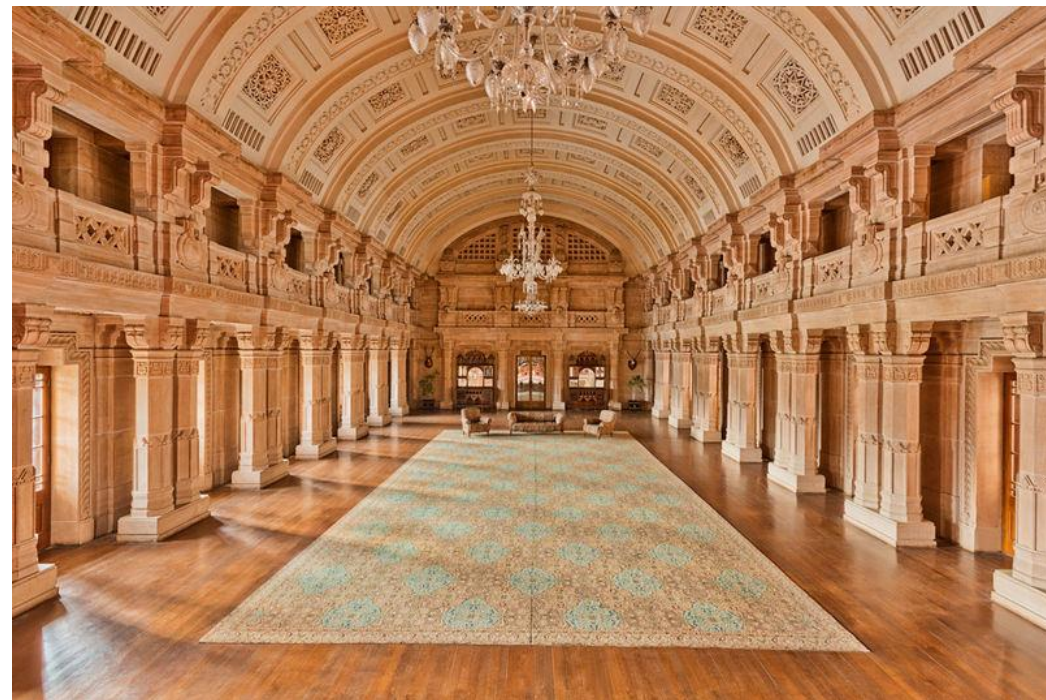
## Marwar Hall



Marwar Hall, with its high ceilings, pure sprung Burmese teak floors, elaborate carvings and crystal chandelier is an ideal place for large formal meetings, semi-formal get together, cocktail reception and pre-function gatherings.

The former Royal Room for receptions and family occasions, The Marwar Hall, with its 4,462 square feet of carpet area, is a befitting venue for royal occasions.

## Rathore Durbar



Rathore durbar exudes an unmistakable sense of history. It's an architectural masterpiece that transcends time. A beautiful amalgam of art deco influences with traditional rajputana grandeur, the grand ballroom back in time used for Maharaja's private parties provides a perfect ambience making them ideal for semi-formal get together, cocktail reception, pre-function gathering and state dinners



# Venue Seating Capacity

BANQUET VENUES	Reception	Sit-down	Theatre Style	Class Room	U-Shape	Hollow Square	Boardroom	AREA ( SQ FT) L X B	DIMENSION (FT)	CEILING HEIGHT (FT)
MARWAR HALL	200	120	210	96	80	88	60	2975	85*35	31
RATHORE DURBAR	200	120	210	96	80	88	60	2975	85*35	31
SMOKING ROOM	40	32	40	30	22	26	18	950	38x25	20
CHAMBER OF PRINCES	X	32	40	X	22	X	18	950	38x25	20
BARADARI		16	X	X	X	8	16	419	21.6x19.6	9.6
BARADARI FRONT LAWNS	2000	500	1500	X	X	X	X	17820	135x132	X
LANCER LAWN	1200	X	X	X	X	X	X	9000	150x60	X
SUNDECK LAWN FRONT	200	100	X	X	X	X	X	2847	39x73	X
FOUNTAIN COURTYARD	75	40	X	X	X	X	X	1330	60x24	X







## Zodiac Pool





# Outdoor Pool

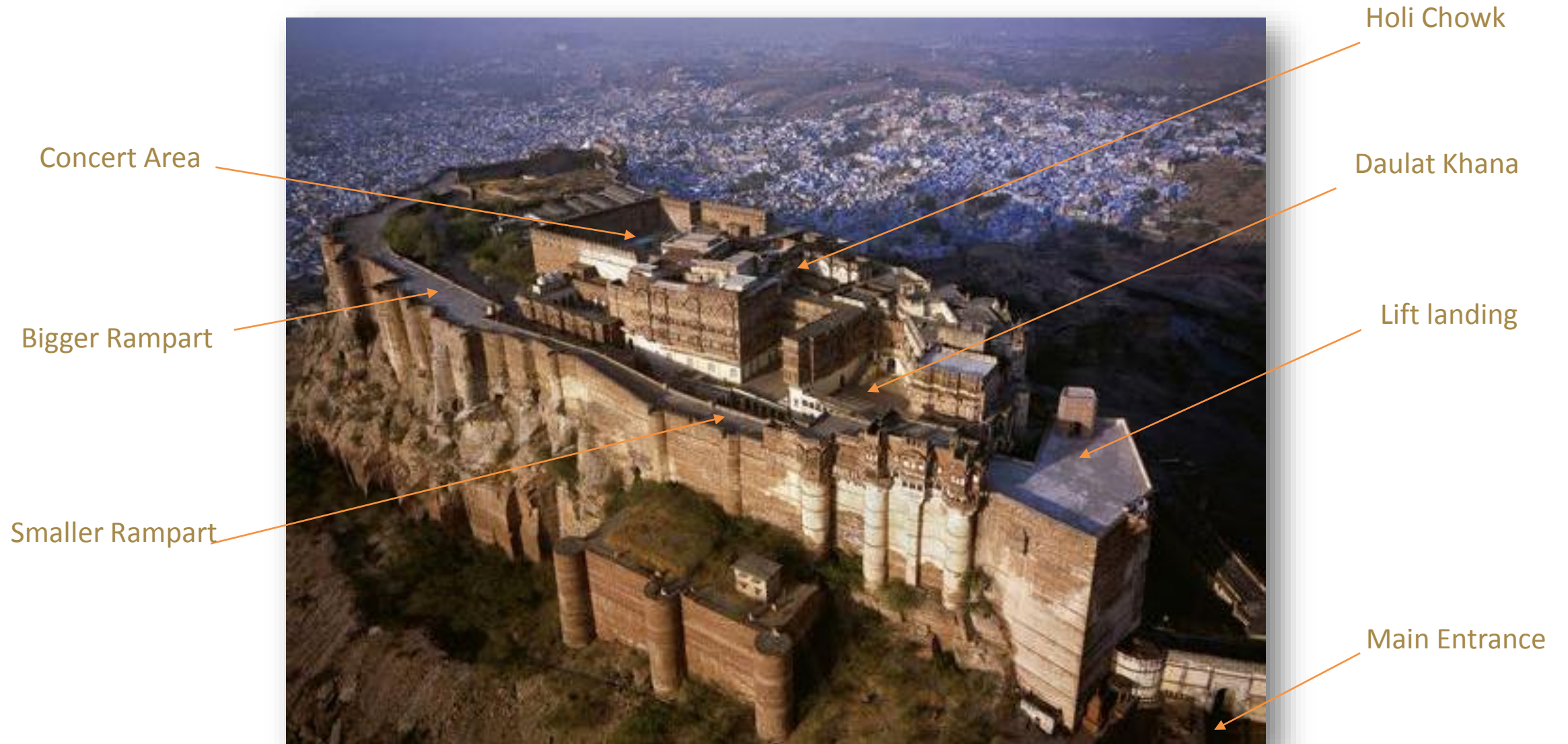








## MEHRANGARH FORT VENUES

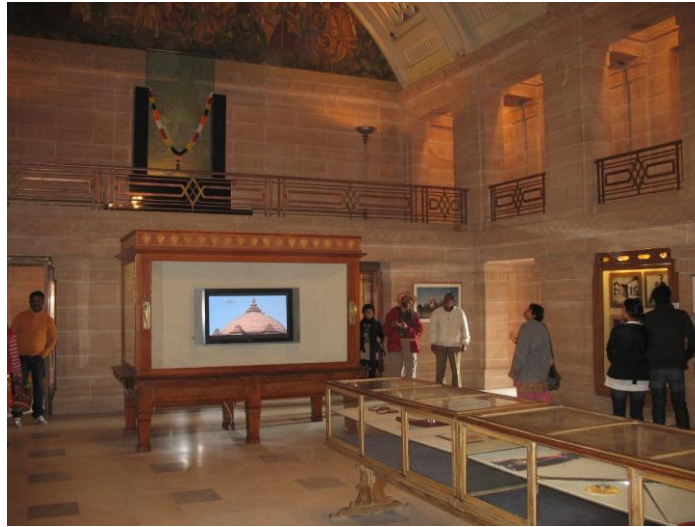








## Umaid Bhawan Palace - Museum



The Palace Museum houses a fine collection of Victorian & Edwardian timepieces, Porcelain & objects d'art, 19<sup>th</sup> and 20<sup>th</sup> century weapons, royal miniature paintings, models of airplanes & exquisite crockery from the maharaja's personal collection.





# Jaswant Thada and Balsamand Lake



Jaswant Thada: Built in memory of maharaja Jaswant Singh II in 1899, this imposing white marble memorial marks the site of the royal crematorium.



Balsamand Lake And Palace: An Enchanting retreat where cool breezes waft through the lush groves of mango & other fruits, it has a placid artificial lake with a summer palace on the embankment.



# Mehrangarh Fort

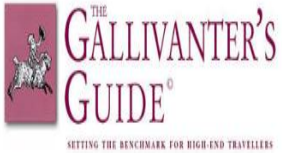


Mehrangarh Fort, Citadel of the sun, was founded by Rao Jodha in 1459 A.D. Crowning a perpendicular cliff, this fort stands sentinel to the city below & houses a palace intricately adorned with carved panels and latticed windows made from red sandstone.













UMAID BHAWAN PALACE, JODHPUR