



DEVI RATN

IHCL SELECTIONS





Product Overview

ACCOMMODATION

- 43 ROOMS 17 SUITES AND 3 VILLAS
- STUNNING VIEW OF THE ARAVALLI HILLS
- ROOMS STARTING FROM 51 SQ. METRES

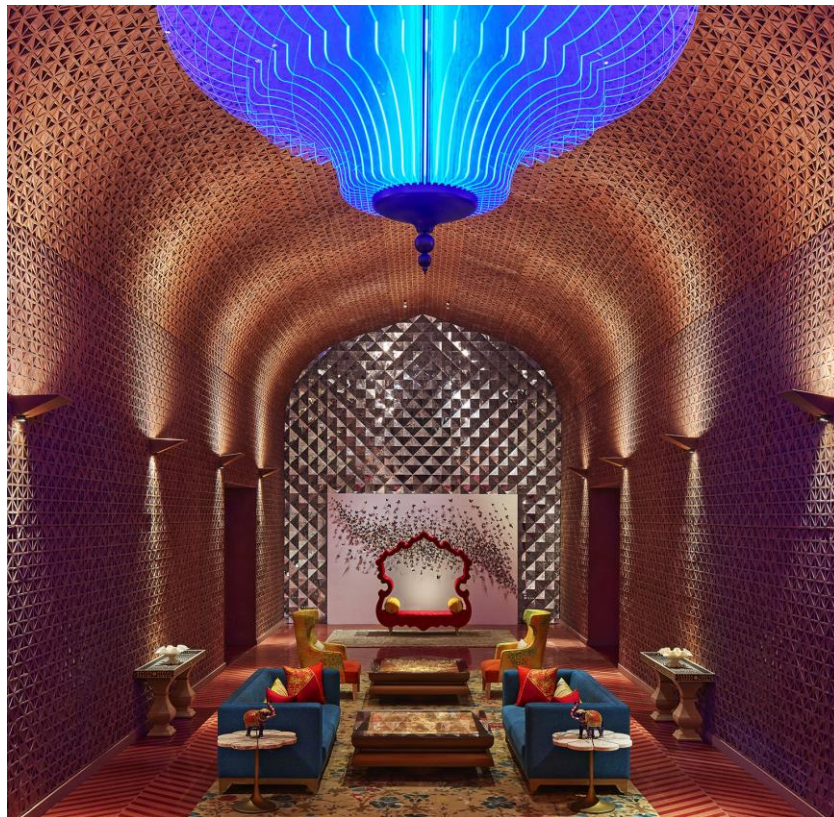
DINING

- VYOM - All Day Dining
- MANDALA - High Energy Bar
- JAL - Poolside Restaurant
- Private Dining options

Main Porch



Lobby



Luxury Room

- 51 Sq Mtr size (550 Sq Ft)
- Located on 1st & 3rd floors
- 49 inch Flat-screen Smart HD TV
- Four fixture bathroom
- Minibar
- Iron & Ironing Board on request
- Tea/Coffee maker
- **Views of the Aravalis and gardens**
- Comfortable seating area & day bed



Extra bed may be added in a room subject to availability and applicable charges

Grand Luxury Room

- 55 Sq Mtr size (600 Sq Ft)
- Views of the Aravalis and gardens
- Sit out area
- Located on ground & 2nd floor
- 49 inch Flat-screen Smart HD TV
- Four fixture bathroom
- Minibar
- Iron & Ironing Board on request
- Tea/Coffee maker



Extra bed may be added in a room subject to availability and applicable charges

Jaipur Suite

- 65 Sq Mtr size (700 Sq Ft)
- Views of the Aravalis and gardens
- Sit out area
- Located on ground floor
- Tea/Coffee maker
- 49-inch flat-screen Smart HD TV
- Four fixture bathroom with Jacuzzi
- Minibar
- Iron & Ironing Board on request

Extra bed may be added in a room subject to availability and applicable charges



Jaipur Suite



Bathroom



Luxury Room



Jaipur Suite

Room type	Size	Inventory
Luxury Room	550 Sq Ft	28
Grand Luxury Room	600 Sq Ft	15
Jaipur Suite	700 Sq Ft	17
SeleQtions Villa	1900 Sq Ft	3
Total		63

Room Corridor / Walk Way



Vyom: All Day Dining



Total Capacity: 128 Pax

Indoor- 104 Pax

Al fresco - 24 Pax

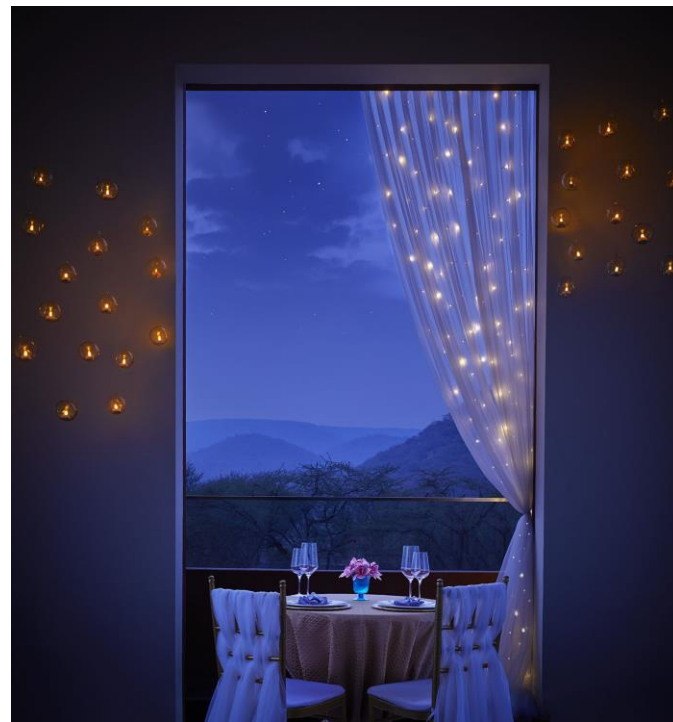
Mandala: High Energy Bar



Capacity: 100

Private Dining Experiences: Machan

This dining experience is an enchanting one that nudges you to the peak of luxury at Devi Ratn. It's a picturesque setting further embellished with candles, lamps and music, overlooking the magnificence of the Aravallis from three sides. The Machan is perched on the highest point of the resort and is inspired by the Samrat Yantra (the colossal sundial at Jantar Mantar). A beautiful stairway leads to this breezy domed terrace that makes for a stunning wine-and-dine rendezvous



Machan Pavillion

Price: INR 25000 + taxes per couple

Private Dining Experiences: Vyom Terrace



Vyom Terrace

Spend a delightful night under a glistening sky full of stars at the Vyom terrace. Dining under the stars is yet another interpretation of the astronomical inclination of Devi Ratn. Relish your courses while your eyes feast on the sparkling sky above. This vast terrace space gives you a spectacular view of the Aravalli peaks and the luminous blanket of stars. Time: Late Evening Assembly point: Vyom Terrace

Price: 5000+ taxes per person

Pool Area



Pool Area: Gym & Recreational Room



Meeting Room



Adya Banquet Hall



Adya 1 Banquet Hall



Adya 2 Banquet Hall

Adya Lawns



Banquet Capacity Grid

Venue	Dimensions	Area	Height	Theatre	Classroom	U-Shape	Boardroom	Round Table	Cocktail	Buffet	Banquet
Meeting Room 1	28 x 37 ft 8x5 x 11.3 m	1,036 ft2 96.2 m2	12 ft 3.7 m	60	-	-	18	30	50	-	-
Adya 1 Banquet Hall	36 x 33 ft 11 x 10.1 m	2,461 ft2 228.6 m2	12 ft 3.7 m	140	40	60	50	80	200	150	80
Adya 2 Banquet Hall	36 x 33 ft 11 x 10.1 m	2,461 ft2 228.6 m2	12 ft 3.7 m	140	40	60	50	80	200	150	80
Adya Banquet Hall	72 x 67 ft 21.9 x 20.4 m	4,922 ft2 457.3 m2	12 ft 3.7 m	360	120	80	70	180	400	350	180
Adya Banquet Lawn	189 x 110 ft 57.6 x 33.5 m	20,790 ft2 1,931.5 m2	-	-	-	-	-	300	1000	1000	300
Front Lawn	190 x 180 ft 57.9 x 54.9 m	34,200 ft2 3,177 m2	-	-	-	-	-	300	1200	1200	300

Jiva Spa



Starry Nights With A Telescope

Devi Ratn is inspired by the Jantar Mantar observatory and narrates an astronomical story. Get closer to the stars and celestial bodies. Sky gaze with a vintage telescope and marvel at their magnificence, a true Carl Sagan moment

Time : 2030 hrs (April - Oct) 1 hour

Time: 1730 hrs (Nov - Mar) 1 hour

Assembly Point – Vyom Terrace



Reimagine Jaipur at Devi Ratn

Get on an architecture and design appreciation tour of Devi Ratn. The resort reimagines Jaipur and presents it across design, structure, spaces and material play. At once informed by the past and inspired by the future the hotel's design is an interpretation of Jantar Mantar, the legendary astronomical observatories. It's interiors present the traditional arts and crafts like the Lehariya, lattice work, redstone art, blue pottery and Thikri.

Time: 1800hrs (April ~ Oct)

45 Minutes Time: 1700hrs (Nov ~ mar) 45 Minutes

Location: Lobby



Culinary Experience

Discover local botany and herb culture with our chef at the resort's herb garden. Pick your favourite veggies and herbs, learn about their distinctive features and how they are native to Rajasthan's flavours, while you watch the chef craft a delectable portion of goodness for you to savour.

Time : 0900hrs – 1800hrs

Assembly point: Herb Garden

Price: INR 1500/- per person



Picnic at Devi Ratn

One of the most beautiful and peaceful ways to spend an afternoon at Devi Ratn is your own private picnic. The bespoke service allows you to drum up the ideal basket of goodies for a wonderful day of munching away on the grass. Also equipped with picnic gear as all baskets come with a blanket, crockery and cutlery on loan. Let us look after every detail as you relax and enjoy the company of your friends, loved ones and family with mesmerizing view of Aravalli Hills.

Price: 1500/- Per Person Assembly point:
Vyom Time: 1500hrs – 1800hrs



Block Printing Your Souvenir

Visit the DIY station of an ancient and majestic Rajasthani craft - Block Printing. Head to the central pavilion of the resort, where you can learn how to stamp intricately carved floral designs onto fabric with a trained artisan. Take your handiwork home, a beautiful souvenir to remind you of Jaipur's Devi Ratn.

Time- 0900hrs- 1800hrs

Assembly point: Street Corridor

Price: INR3500/- per person



Village Voyage

Seekers of the local would relish this voyage that allows them to venture through the forest and to a traditional local household to experience classic Rajasthani fare. This adventure includes a camelcart ride along rustic roads, A temple visit and sightings of a few animals and birds at the quarry. Get a glimpse of the local life, enjoy a home cooked meal, and discover stories & fables.

Assembly Point: Lobby

Time: 0900hrs – 1800hrs

Price: INR 5000/- Per Person



Adventure Activities



Experience an adrenaline rush with a range of adventure activities at Devi Ratn. Test your aiming skills with Paintball, Air Gun-Shooting and Archery; get heady with the Trampoline, and traverse the many slopes and curvy paths around Devi Ratn on a bicycle.



Time- 0900hrs- 1800hrs
Assembly point: Activity Lawn
Price: as per the activity

Other Activities



Yoga – Relax your body & unwind with our yoga classes

Time: 7 am – 8 am

Cycling (For Kids) – Ride a bike through our cycling track.

Time: 9 am - 6 pm

Indoor Games (For Kids) – Games for kids include, Arts & Crafts, PlayStation, Carrom board, foosball, table tennis, badminton, cricket.

Time: 9 am - 6 pm

Hi Tea – Take a break from your day, enjoy some tea & snacks.

Time: 4 pm – 5 pm

Connectivity- Jaipur

By Road:

- Jaipur has good network of roads connecting it with major Indian cities. National capital New Delhi is just 235 KM from this beautiful city while the city of the Taj Mahal, Agra, is only 220 KM from here.

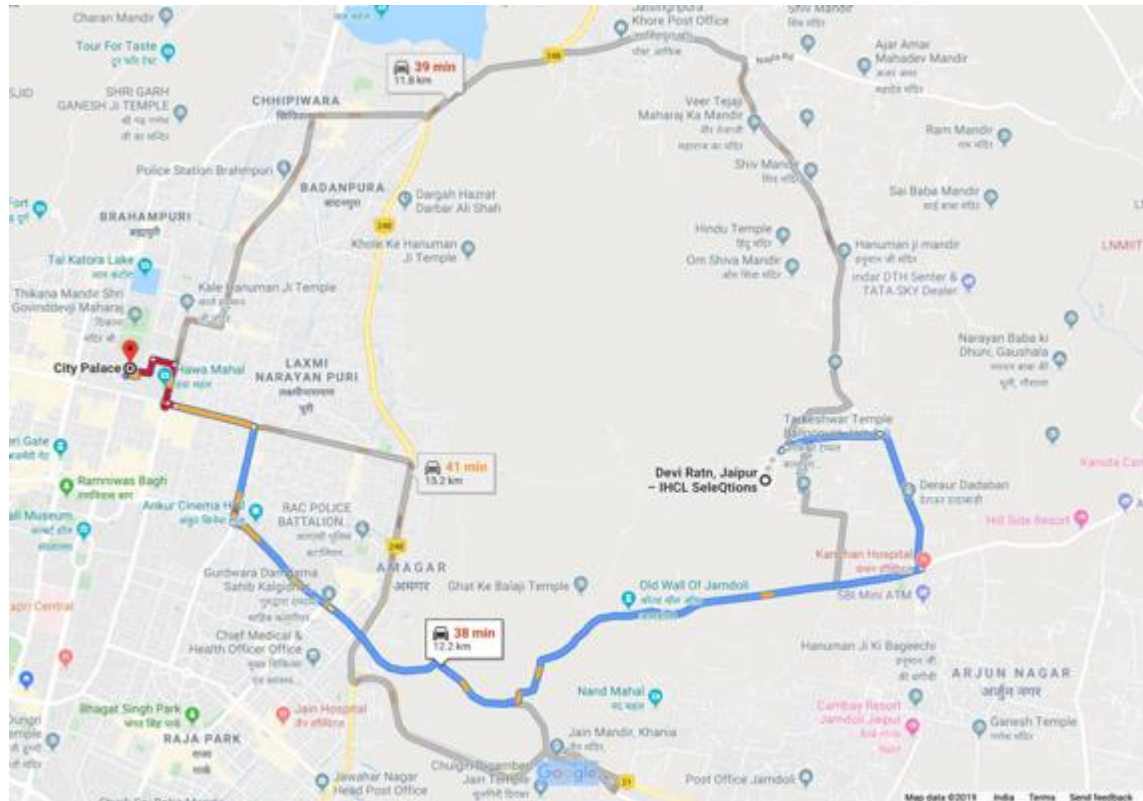
By Rail:

- Jaipur is connected with all major cities by train. The hotel is a 30 min drive (16 kms) from the Station

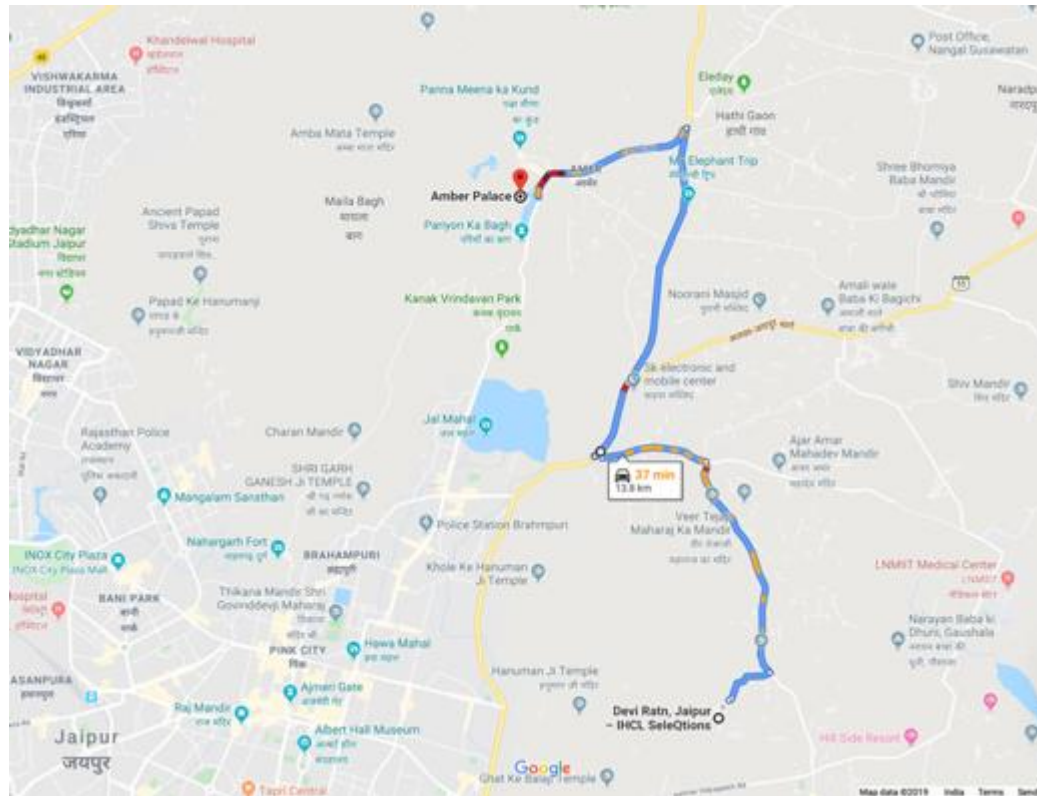
By Flight:

- Sanganer airport is the nearest airport to the city of Jaipur. It is located at a distance of 10 kilometers from the city centre with flight connectivity with major Indian cities like Mumbai and Delhi. International tourists can take connecting flights to Jaipur from Mumbai or Delhi airport. The hotel is a 40 min drive (18.3 kms) from the Airport

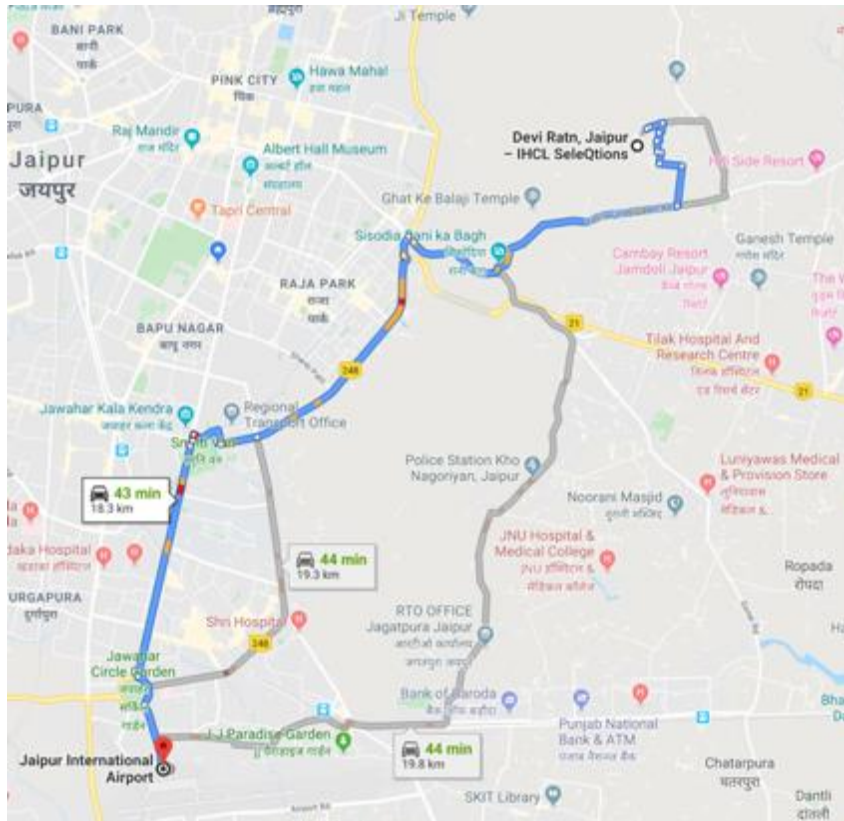
Distance and Route to City Palace

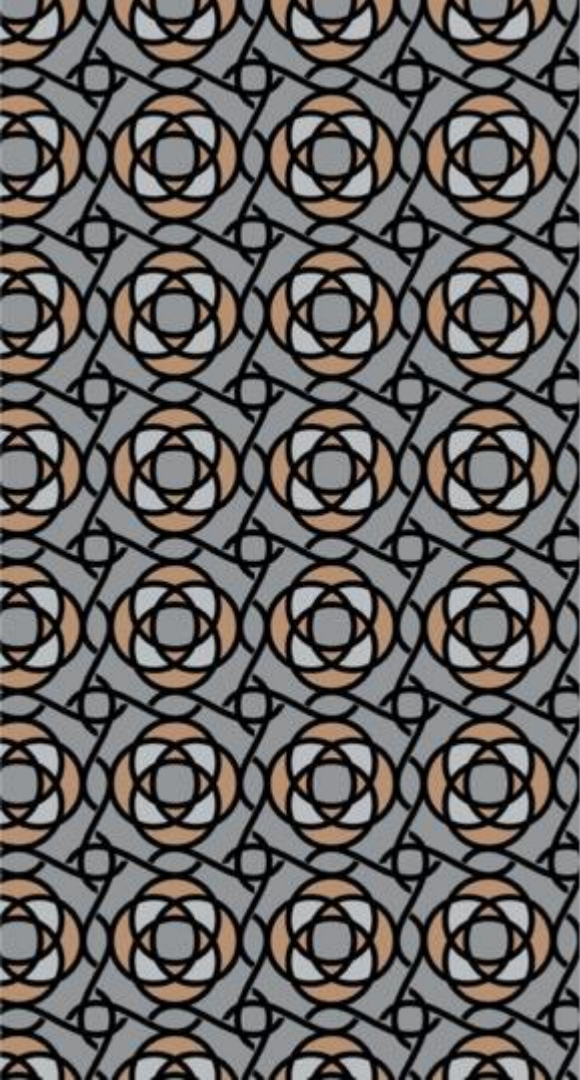


Distance and Route to Amber Fort



Distance and Route from Jaipur International Airport





Thank **You.**

Contact person **Sumit Banerji**

Contact number **7838381495**

IHCL SELEQTIONS